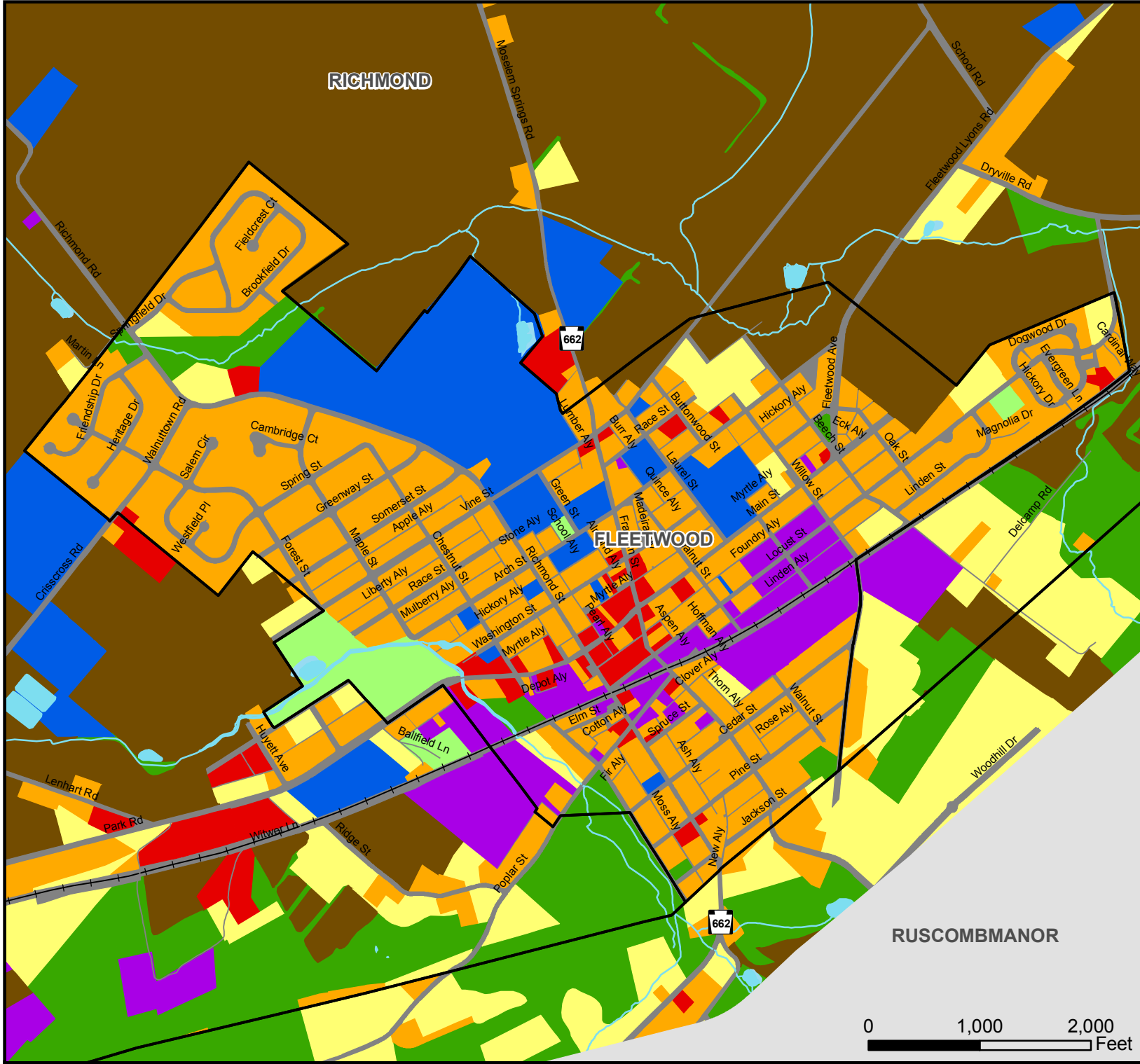


FIGURE 7-B

Fleetwood, Maiden Creek, Richmond  
Joint Comprehensive Plan Update  
September 2011

### Fleetwood Borough Existing Land Use



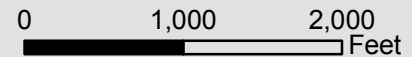
- Existing Land Use**
- Agriculture
  - Commercial
  - Industrial
  - Institutional
  - Rural/Woodland
  - Recreation
  - Residential High
  - Residential Low
  - Transportation
  - Water

- Municipal Boundaries
- Railroad

Source data:  
Berks County Planning Commission, Berks County GIS,  
Berks County Department of Emergency Services

Published by the Berks County Planning Commission  
BAB 9/11

RUSCOMBMANOR



[www.co.berks.pa.us/planning](http://www.co.berks.pa.us/planning)