

Air Quality Conformity Analysis Report

**Reading MPO 2027-2030 Transportation Improvement Program (TIP) and
2050 Long Range Transportation Plan (LRTP)**

National Ambient Air Quality Standards (NAAQS) Addressed:

- 2008 8-Hour Ozone (Nonattainment)

Prepared By:

**The Berks County Planning Commission and
Pennsylvania Department of Transportation
for the
Reading Area Transportation Study Coordinating Committee**

Adopted May 21, 2026

READING AREA TRANSPORTATION STUDY
C/O BERKS COUNTY PLANNING COMMISSION
400 E. WYOMISSING AVE, BOX 2
MOHNTON, PA 19540
Phone: (610) 478-6300
Email: planning@berkspa.gov
Web Site: <https://www.berkspa.gov/departments/planning-commission>

The preparation of this report has been financed in part through grants from the U.S. Department of Transportation and the Pennsylvania Department of Transportation. The contents of this report reflect the views of the authors who are responsible for the facts and the accuracy of the data presented herein. The contents do not necessarily reflect the official policies of the U.S. Department of Transportation, Federal Highway Administration (FHWA), Federal Transit Administration (FTA), or the Commonwealth of Pennsylvania at the time of publication. This report does not constitute a standard, specification, or regulation.

The Reading Area Transportation Study (RATS) fully complies with Title VI of the Civil Rights Act of 1964, Executive Order 12898 on Environmental Justice, and related nondiscrimination statutes and regulations in all programs and activities. The Berks County/RATS website provides language translation software, offering translation between English, Spanish, and multiple other languages. Publications and other public documents can be made available in alternative languages and formats, if requested. Any person who believes they have been aggrieved by an unlawful discriminatory practice by RATS under Title VI has a right to file a formal complaint. Any such complaint must be in writing and filed with RATS's Title VI Compliance Officer and/or the appropriate state or federal agency within 180 days of the alleged discriminatory occurrence. For more information on RATS' Title VI program, or to obtain copies of RATS' Title VI Policies, Complaint Procedures, or Complaint Form, please contact the Title VI Compliance Officer at (610) 478-6300, email planning@berkspa.gov, or visit our website at <https://www.berkspa.gov/departments/planning-commission/transportation-reading-mpo/reading-area-transportation-study-meeting-schedule>

In accordance with the requirements of Title II of the Americans with Disabilities Act of 1990 ("ADA"), RATS will not discriminate against qualified individuals with disabilities based on disability in its services, programs, or activities. RATS' public meetings are always held in ADA-accessible facilities and in transit-accessible locations when possible. Auxiliary services can be provided to individuals who submit a request at least seven (7) days prior to a meeting. Requests made within seven (7) days will be accommodated to the greatest extent possible. Anyone who requires an auxiliary aid or service for effective communication, or a modification of policies or procedures to participate in a program, service, or activity of RATS, or has complaints that a program, service, or activity of RATS is not accessible to persons with disabilities please contact the ADA Point of Contact at (610) 478-6300, email planning@berkspa.gov or visit our website at <https://www.berkspa.gov/departments/planning-commission/transportation-reading-mpo/reading-area-transportation-study-meeting-schedule>

Documents will be made available in alternative languages or formats if requested. Persons requiring additional accommodations or those with questions should call 610-478-6300.

Estos informes y/o documentos estarán disponibles en diversos lenguajes y formatos si es necesario. Personas que necesiten acomodo razonable o con preguntas pueden comunicarse al 610-478-6300.

THIS PAGE INTENTIONALLY LEFT BLANK

Limited English Proficiency (LEP) Taglines

English

ATTENTION: If you speak another language other than English, language assistance services can be made available to you. Call 1 (610) 478-6300.

Vietnamese

CHÚ Ý: Nếu bạn nói một ngôn ngữ khác ngoài tiếng Anh, dịch vụ hỗ trợ ngôn ngữ có thể được cung cấp cho bạn. Gọi 1 (610) 478-6300.

Korean

주의: 영어 외에 다른 언어를 사용하시는 경우, 언어 지원 서비스를 제공받으실 수 있습니다. 전화번호 1 (610)478-6300로 전화하세요.

French

« ATTENTION : Si vous parlez une autre langue que l'anglais, des services d'assistance linguistique peuvent être mis à votre disposition. Appelez le 1 (610) 478-6300. »

Somali

FIIRO GAAR AH: Haddii aad ku hadasho luqad kale aanan ahayn Ingiriisiga, adeegyada gargaarka luqadda ayaa lagu diyaarin karaa. Wac 1 (610) 478-6300.

Russian

ВНИМАНИЕ: Если вы говорите на другом языке, кроме английского, вам могут быть предоставлены услуги языковой помощи. Позвоните по номеру 1 (610) 478-6300.

Ukrainian

УВАГА: Якщо ви говорите іншою мовою, окрім англійської, вам можуть бути надані послуги мовної підтримки. Телефонуйте за номером 1 (610) 478-6300.

Simplified Chinese

注意：如果您讲英语以外的其他语言，我们可以为您提供语言协助服务。请致电 1 (610) 478-6300。

Traditional Chinese

注意：如果您說英語以外的其他語言，我們可為您提供語言協助服務。致電 1 (610) 478-6300。

Arabic

لغة أخرى غير اللغة الإنجليزية، يمكننا توفير خدمات المساعدة اللغوية لك. اتصل تنبيه: إذا كنت تتحدث
بالرقم ٦٣٠٠-٤٧٨ (١ ١) 6300-478 (610)

.1

Burmese

အာရုံစိုက်မှု- အင်္ဂလိပ်ဘာသာမှတစ်ပါး အခြားဘာသာစကားကို ပြောဆိုပါက ဘာသာစကားအထောက်အပံ့ ဝန်ဆောင်မှုများကို သင့်အား ရရှိနိုင်ပါသည်။ ၁ (၆၁၀) ၄၇၈-၆၃၀၀ ခေါ်ဆိုပါ။

Japanese

注意：英語以外の言語を話す場合は、言語支援サービスを利用できるようにすることができます。電話 1 (610) 478-6300.

Hindi

ध्यान दें: यदि आप अंग्रेजी के अलावा कोई अन्य भाषा बोलते हैं, तो आपको भाषा सहायता सेवाएं उपलब्ध कराई जा सकती हैं। 1 (610) 478-6300 पर कॉल करें।

Italian

ATTENZIONE: Se parli una lingua che non sia l'inglese, i servizi di assistenza linguistica possono essere messi a tua disposizione. Chiama 1 (610) 478-6300.

Polish

UWAGA: Jeśli posługujesz się językiem innym niż angielski, możesz skorzystać z usługi pomocy językowej. Zadzwoń pod numer 1 (610) 478-6300.

Nepali

ध्यान दिनुहोस्: यदि तपाईं अङ्ग्रेजीबाहेक अरू भाषा बोल्नुहुन्छ भने, भाषा सहायता सेवाहरू तपाईंलाई उपलब्ध गराउन सकिन्छ। 1 (610) 478-6300 को कॉल करें।

Urdu

توجہ: اگر آپ انگریزی کے علاوہ دوسری زبان بولتے ہیں تو، زبان کی مدد کی خدمات آپ کو دستیاب کرائی جاسکتی ہیں۔ کال 1 (610) 478-6300.

Spanish

ATENCIÓN: Si habla otro idioma que no sea inglés, habrá servicios de asistencia en otros idiomas disponibles. Llame al 1 (610) 478-6300.

Greek

ΠΡΟΣΟΧΗ: Εάν μιλάτε άλλη γλώσσα διαφορετική από τα αγγλικά, οι υπηρεσίες γλωσσικής βοήθειας μπορούν να σας διατεθούν. Καλέστε 1 (610) 478-6300.

AIR QUALITY RESOLUTION FOR THE READING MPO

Conformity of the FFY 2027–2030 Transportation Improvement Program (TIP) and 2050 Long Range Transportation Plan in Accordance with the Clean Air Act Amendments of 1990.

WHEREAS the Congress of the United States enacted the Clean Air Act Amendments of 1990 which was signed into law and became effective on November 15, 1990, hereafter referred to as "the CAAA"; and,

WHEREAS the United States Environmental Protection Agency (EPA), under the authority of the CAAA, has defined the geographic boundaries for areas that have been found to be in non-attainment with the National Ambient Air Quality Standards (NAAQS) for ozone and particulate matter; and,

WHEREAS the Reading Metropolitan Planning Organization area was designated under the 2008 eight-hour ozone standard as a marginal non-attainment area by EPA with an effective date of July 20, 2012; and,

WHEREAS effective April 5, 2005, the Reading Metropolitan Planning Organization area has been designated under the 1997 Fine Particulate Matter (PM_{2.5}) annual standard as a non-attainment area by EPA; and,

WHEREAS effective December 22, 2014 the Reading Metropolitan Planning Organization area was redesignated as an attainment area under the 1997 annual PM_{2.5} NAAQS with an approved Maintenance State Implementation Plan that includes motor vehicle emission budgets; and,

WHEREAS effective October 24, 2016 the EPA finalized the option that revokes the 1997 primary annual PM_{2.5} NAAQS in areas that have been designated attainment or maintenance of that NAAQS removing the transportation conformity requirements for this NAAQS; and,

WHEREAS the transportation plans and programs are required to conform to the purposes of the State Implementation Plan and Sections 174 and 176 (c and d) of the CAAA (42 U.S.C. 7504, 7506 (c and d)); and,

WHEREAS the EPA issued the Final Rule on Transportation Conformity on November 24, 1993 for transportation plans and programs and projects; and,

WHEREAS the EPA amended the Final Conformity Rule various times between 1996 and present; and,

WHEREAS the Reading Area Transportation Study, the Metropolitan Planning Organization for Berks County, Pennsylvania, is responsible for the development of transportation plans and programs in accordance with Section 134 of Title 23, which requires coordination and public participation with the State DOT; and,

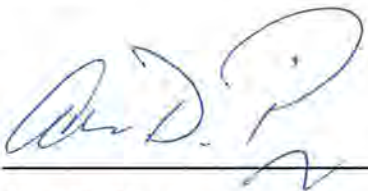
WHEREAS the final conformity rule (and subsequent amendments) requires that the Reading Area Transportation Study Coordinating Committee determine that the transportation plans and programs conform to the CAAA requirements by meeting the criteria described in the final guidelines.

NOW, THEREFORE BE IT RESOLVED THAT the Reading Area Transportation Study Coordinating Committee has found that the FFY 2027-2030 Transportation Improvement Program (TIP) and the 2050 Long Range Transportation Plan (LRTP) contribute to the achievement and maintenance of the ambient air quality standards; and,

NOW, THEREFORE BE IT FURTHER RESOLVED THAT the Reading Area Transportation Study Coordinating Committee finds that the FFY 2027-2030 Transportation Improvement Program (TIP) and 2050 Long Range Transportation Plan are consistent with the Final Conformity Rule issued on November 24, 1993 and subsequent amendments.

I hereby certify that this Resolution was adopted by the Reading Area Transportation Study Coordinating Committee on **May 21, 2026**.

ATTEST:



Alan D. Piper
Reading MPO Secretary



Christopher Kufro, P.E.
Reading MPO Chairperson

Table of Contents

Overview	1
Background on Transportation Conformity	1
Report Contents	2
National Ambient Air Quality Standard Designations.....	2
Ozone	2
Interagency Consultation.....	3
Analysis Methodology and Data	3
Key MOVES Input Data	6
Analysis Process Details	13
Conformity Analysis Results.....	18
Conformity Determination.....	20
Resources.....	21
Highway Vehicle Emissions Analysis Glossary	22

Table of Exhibits

Exhibit 1: Summary of Attachments	2
Exhibit 2: Local Data Inputs Used for Conformity Runs	5
Exhibit 3: Emission Calculation Process	6
Exhibit 4: Socioeconomic Growth Assumptions to the Travel Model	7
Exhibit 5: MOVES Source Types and HPMS Vehicle Groups	9
Exhibit 6: PPSUITE Speed/Emission Estimation Procedure.....	15
Exhibit 7: MOVES Run Specification File Parameter Settings	17
Exhibit 8: 8-Hour Ozone Motor Vehicle Emission Budgets.....	18
Exhibit 9: Transportation Conformity Analysis Years.....	19
Exhibit 10: Ozone Emission Analysis Results and Conformity Test.....	19

Summary of Attachments

- Attachment A:** Project List
- Attachment B:** Detailed Emission Results
- Attachment C:** Sample MOVES Input Files

Overview

This report provides an analysis of the air quality implications of the current Reading Area Transportation Study (RATS) Coordinating Committee Metropolitan Planning Organization (MPO) 2027-2030 Transportation Improvement Program (TIP) and the 2050 Long Range Transportation Plan (LRTP). The analysis demonstrates transportation conformity under the 2008 8-hour ozone National Ambient Air Quality Standard (NAAQS). The air quality conformity analysis reflects an assessment of the regionally significant, non-exempt transportation projects included in the TIP and LRTP. This document replaces the previously approved conformity demonstration and ensures that the findings meet all current criteria established by the U.S. Environmental Protection Agency (EPA) for the applicable NAAQS.

Background on Transportation Conformity

Transportation conformity is a way to ensure that federal funding and approval are awarded to transportation activities that are consistent with air quality goals. Under the Clean Air Act (CAA), transportation and air quality modeling procedures must be coordinated to ensure that the transportation programs are consistent with the area's applicable State Implementation Plan (SIP). The SIP is a federally approved and enforceable plan by which each area identifies how it will attain and/or maintain the health-related primary and welfare-related secondary NAAQS.

In order to receive transportation funding and approvals from the Federal Highway Administration (FHWA) or the Federal Transit Administration (FTA), state and local transportation agencies must demonstrate that the plans, programs, or projects meet the transportation conformity requirements of the CAA as set forth in the transportation conformity rule. Under the transportation conformity rule, transportation plans are expected to conform to the applicable SIP in nonattainment or maintenance areas. The integration of transportation and air quality planning is intended to ensure that transportation plans, programs, and projects will not:

- Cause or contribute to any new violation of any applicable NAAQS.
- Increase the frequency or severity of any existing violation of any applicable NAAQS.
- Delay timely attainment of any applicable NAAQS, any required interim emissions reductions, or other NAAQS milestones.

The transportation conformity determination includes an assessment of future highway emissions for defined analysis years. Emissions are estimated using the latest available planning assumptions and available analytical tools, including EPA's latest approved on-highway mobile sources emissions model, the Motor Vehicle Emission Simulator (MOVES). The conformity determination provides a tabulation of the analysis results for applicable precursor pollutants, showing that the required conformity test was met for each analysis year.

Report Contents

This document includes a summary of the methodology and data assumptions used for the conformity analysis. As shown in **Exhibit 1**, attachments containing additional detail have been provided with the document. In addition, modeling input and output files have been reviewed by the Environmental Protection Agency (EPA) Region III and the Pennsylvania Department of Environmental Protection (DEP).

EXHIBIT 1: SUMMARY OF ATTACHMENTS

Attachment	Title	Description
A	Project List	Provides a list of regionally significant highway projects.
B	Detailed Emission Results	Provides a detailed summary of emissions by roadway type.
C	MOVES Sample Run Specification	Provides example MOVES data importer (XML) and run specification (MRS) files.

National Ambient Air Quality Standard Designations

The CAA requires the EPA to set NAAQS for pollutants considered harmful to public health and the environment. A nonattainment area is any area that does not meet the primary or secondary NAAQS. Once a nonattainment area meets the standards and additional redesignation requirements in the CAA [Section 107(d)(3)(E)], EPA will designate the area as a maintenance area.

The RATS MPO area (Berks County) is currently designated as a nonattainment area under the 2008 8-hour ozone NAAQS. The county is attaining all other current NAAQS. Transportation conformity requires nonattainment and maintenance areas to demonstrate that all future transportation projects will not prevent an area from reaching its air quality attainment goals.

Ozone

Ozone is formed by chemical reactions occurring under specific atmospheric conditions. Precursor pollutants that contribute to the formation of ozone include VOC and NO_x, both of which are components of vehicle exhaust. VOCs may also be produced through the evaporation of vehicle fuel, as well as by displacement of vapors in the gas tank during refueling. By controlling VOC and NO_x emissions, ozone formation can be mitigated.

1997 and 2008 8-hour Ozone NAAQS

The EPA published the 1997 8-hour ozone NAAQS on July 18, 1997, (62 FR 38856), with an effective date of September 16, 1997. An area was in nonattainment of the 1997 8-hour ozone NAAQS if the 3-year average of the individual fourth highest air quality monitor readings, averaged over 8 hours throughout the day, exceeded the NAAQS of 0.08 parts per million (ppm). On May 21, 2013, the EPA published a

rule revoking the 1997 8-hour ozone NAAQS, for the purposes of transportation conformity, effective one year after the effective date of the 2008 8-hour ozone NAAQS area designations (77 FR 30160). As of July 20, 2013, Berks County no longer needs to demonstrate conformity to the 1997 8-hour ozone NAAQS. However, future SIP revisions must address EPA's anti-backsliding requirements.

The EPA published the 2008 8-hour ozone NAAQS on March 27, 2008, (73 FR 16436), with an effective date of May 27, 2008. EPA revised the ozone NAAQS by strengthening the standard to 0.075 ppm. Thus, an area is in nonattainment of the 2008 8-hour ozone NAAQS if the 3-year average of the individual fourth highest air quality monitor readings, averaged over 8 hours throughout the day, exceeds the NAAQS of 0.075 ppm. Berks County was designated as a nonattainment area under the 2008 8-hour ozone NAAQS, effective July 20, 2012 (77 FR 30088).

2015 8-hour Ozone NAAQS

In October 2015, based on its review of the air quality criteria for ozone and related photochemical oxidants, the EPA revised the primary and secondary NAAQS for ozone to provide requisite protection of public health and welfare, respectively (80 FR 65292). The EPA revised the levels of both standards to 0.070 ppm, and retained their indicators, forms (fourth-highest daily maximum, averaged across three consecutive years) and averaging times (eight hours). On April 30, 2018, EPA completed area designations, and Berks County was designated as an attainment area for the standard.

Interagency Consultation

As required by the federal transportation conformity rule, the conformity process includes a significant level of cooperative interaction among federal, state, and local agencies. For this air quality conformity analysis, interagency consultation was conducted as required by the Pennsylvania Conformity SIP. This included meetings of the Pennsylvania Transportation and Air Quality Work Group that includes the Pennsylvania Department of Transportation (PennDOT), DEP, EPA, FHWA, FTA and representatives from larger MPOs within the state. Meetings are conducted quarterly and include the review of all input planning assumptions, methodologies and analysis years. The latest planning assumptions used for this conformity determination were coordinated at the January 29, 2026 workgroup meeting.

Analysis Methodology and Data

This transportation conformity analysis was conducted using EPA's MOVES model, which is the official model for estimating emissions from highway vehicles for SIP emission inventories and transportation conformity. MOVES5 has been used for this conformity determination and is (in addition to MOVES4) currently considered one of the latest approved model versions for SIP and transportation conformity purposes (89 FR 99862). After December 11, 2026, MOVES5 must be used for conformity determinations.

Planning assumptions are updated following EPA and FHWA joint guidance (EPA420-B-08-901) that clarifies the implementation of the latest planning assumption requirements in 40 CFR 93.110. This

analysis utilizes the best available latest traffic, vehicle fleet and environmental data to estimate regional highway emissions.

PennDOT updates many of the key planning assumptions on a triennial basis to support EPA's National Emissions Inventory (NEI) and FHWA's latest planning assumption requirements for transportation conformity. For this conformity analysis, the data draws from the latest MPO regional travel demand model and PennDOT's latest 2023 triennial data update. The PennDOT triennial data update also is used to inform the planning assumptions for the future analysis years used for transportation conformity.

The analysis methodology and data inputs for this analysis were developed through interagency consultation and used available EPA guidance documents that included:

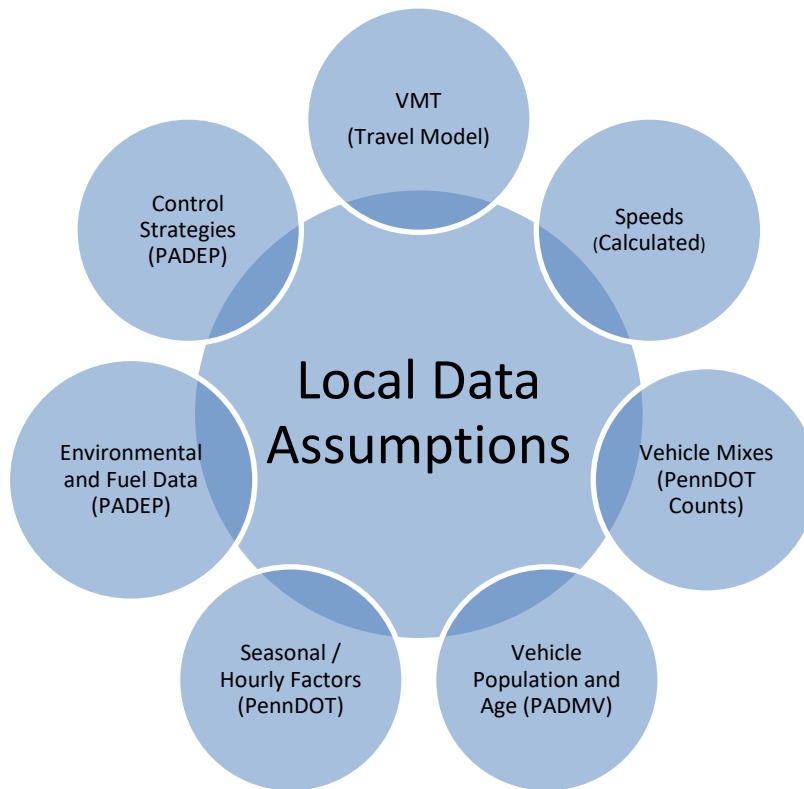
- *MOVES5 Policy Guidance: Use of MOVES for State Implementation Plan Development, Transportation Conformity, General Conformity, and Other Purposes*, US EPA Office of Transportation and Air Quality, EPA-420-B-24-038, November 2024.
- *MOVES5 Technical Guidance: Using MOVES to Prepare Emission Inventories for State Implementation Plans and Transportation Conformity*, US EPA Office of Transportation and Air Quality, EPA-420-B-24-043, November 2024. U.S.

A mix of local and national default (internal to MOVES) data are used in the analysis. As illustrated in **Exhibit 2**, local data has been used for data items that have a significant impact on emissions, including: vehicle miles of travel (VMT), vehicle population, congested speeds, and vehicle type mix, as well as environmental and fuel assumptions. Local data inputs to the analysis process reflect the latest available planning assumptions using information obtained from PennDOT, DEP and other local/national sources.

The methodology used for this analysis is consistent with the methodology used to develop SIP inventories. This includes the use of custom post-processing software (PPSUITE) to calculate hourly speeds and prepare key traffic input files to the MOVES emission model. PPSUITE consists of a set of programs that perform the following functions:

- Analyzes highway operating conditions.
- Calculates highway speeds.
- Compiles VMT and vehicle type mix data.
- Prepares MOVES runs and processes MOVES outputs.

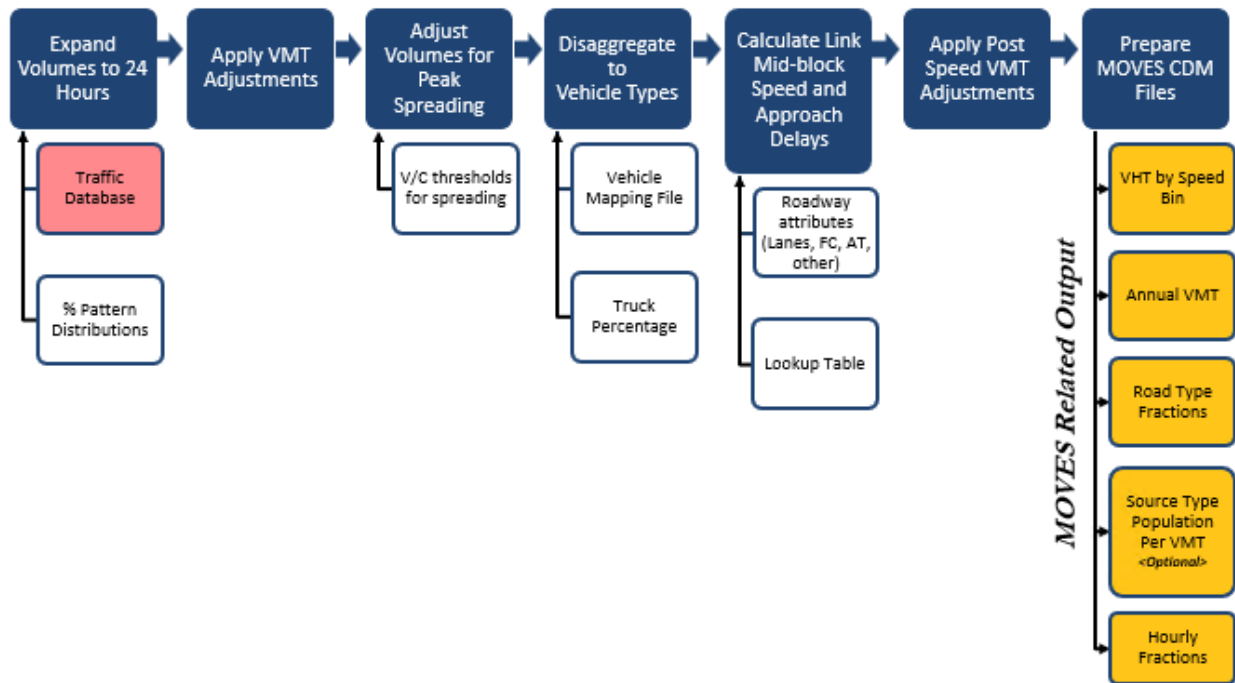
EXHIBIT 2: LOCAL DATA INPUTS USED FOR CONFORMITY RUNS



PPSUITE is a widely used and accepted tool for estimating speeds and processing emissions rates. The PPSUITE tool has been used for developing on-highway mobile source inventories in SIP revisions, control strategy analyses, and conformity analyses in other states. The software was developed to utilize accepted transportation engineering methodologies. The PPSUITE process is integral to producing traffic-related input files to the MOVES emission model. **Exhibit 3** summarizes the key functions of PPSUITE within the emission calculation process. Other MOVES input files are prepared externally to the PPSUITE software, including vehicle population, vehicle age, environmental and fuel input files.

The CENTRAL software is also used in this analysis. CENTRAL is a menu-driven software platform that executes the PPSUITE and MOVES processes in batch mode. The CENTRAL software allows users to execute runs for a variety of input options and integrates custom SQL steps into the process. CENTRAL provides important quality control and assurance steps, including file naming and storage automation.

EXHIBIT 3: EMISSION CALCULATION PROCESS



Key MOVES Input Data

A large number of inputs to MOVES are needed to fully account for the numerous vehicle and environmental parameters that affect emissions. These inputs include traffic flow characteristics, vehicle descriptions, fuel parameters, I/M program parameters and environmental variables. MOVES includes a default national database of meteorology, vehicle fleet, vehicle activity, fuel and emission control program data for every county; EPA, however, cannot certify that the default data is the most current or best available information for any specific area. As a result, local data, where available, is recommended for use when conducting a regional conformity analysis. A mix of local and default data is used for this analysis. These data items are discussed in the following sections.

Travel Demand Model

The roadway data input to emissions calculations for this conformity analysis is based on information from the region’s travel demand forecasting model. The travel demand model estimates roadway volumes based on input demographic forecasts and expected changes to the transportation roadway network.

The travel demand model follows the basic “four-step” travel demand forecasting process and utilizes the Cube BASE (TP+) software platform. The model consists of 673 Traffic Analysis Zones (TAZ’s), approximately 16,000 links, and approximately 9,000 nodes. The network contains attributes such as

distance, number of lanes, area type, facility type, free flow speed, capacity of the lane, and location of traffic signals.

The regional travel model was updated in 2025. The updates included enhancing the network and zone structure, and validating the model to a 2023 base year to ensure that it produces reasonable base year travel estimates consistent with that reported in PennDOT’s Highway Performance Monitoring System (HPMS). Using the projected traffic volume data from the model, conditions were evaluated for all applicable future analysis years. All significant air quality projects from the TIP were coded into the travel demand model.

The travel demand model also includes a transit component that accounts for ridership on the Berks Area Regional Transportation Authority (BARTA) fixed route bus system. Each of BARTA’s bus service lines are coded in the model with information on stop locations, fares, service frequency and average run times, all representing the latest service attributes. In addition, a sidewalk network is used within the model’s mode choice module to examine and evaluate accessibility to transit. The transit ridership was validated and adjusted to be consistent with BARTA’s reported ridership totals. Base and future year ridership estimates generated by this module are fed back into the model stream as part of the overall network processing.

Traffic forecasts were projected based on the socioeconomic and land use data projections developed by Berks County Planning Commission. This data includes total population, households, and employment. **Exhibit 4** summarizes the socioeconomic data for the conformity analysis years.

EXHIBIT 4: SOCIOECONOMIC GROWTH ASSUMPTIONS TO THE TRAVEL MODEL

County	Year	Population	Household	Total Employment
Berks	2030	438,431	163,025	200,321
	2040	453,114	168,482	212,902
	2050	465,107	185,572	227,253

The travel model network and assigned traffic volumes are processed by PPSUITE to prepare the traffic inputs needed to run the MOVES emission model. The following information is extracted from the model for emission calculations:

- Lanes
- Roadway capacity
- Distance
- Daily traffic volume
- Type of area abutting the roadway (e.g. urban, suburban, rural, etc.)
- Type of roadway facility (e.g. interstate, arterial, collector, local, etc.)

Other Supporting Traffic Data

Other traffic data is used to adjust and disaggregate traffic volumes. Key sources used in these processes include the following:

- *Highway Performance Monitoring System (HPMS VMT)*: According to EPA guidance, baseline inventory VMT computed from the regional travel model must be adjusted to be consistent with HPMS VMT totals. The VMT contained in the HPMS reports are considered to represent average annual daily traffic (AADT), an average of all days in the year, including weekends and holidays. Adjustment factors are calculated and used to adjust locally modeled roadway data VMT to be consistent with the reported HPMS totals, and are applied to all county and facility group combinations within the region. These adjustments are important to account for local roadway VMT not represented within the regional travel demand model.
- *Seasonal Factors*: The traffic volumes estimated from the regional travel demand model are adjusted to summer or average monthly conditions (as needed for annual processing), using seasonal adjustment factors prepared by PennDOT's Bureau of Planning and Research (BPR) in their annual traffic data report published on the BPR website (<http://www.dot.state.pa.us/> Search: Research and Planning). The seasonal factors are also used to develop MOVES daily and monthly VMT fraction files, allowing MOVES to determine the portion of annual VMT that occurs in each month of the year.
- *Hourly Patterns*: Speeds and emissions vary considerably depending on the time of day. In order to produce accurate emission estimates, it is important to estimate the pattern by which roadway volume varies by breaking the data down into hourly increments. Pattern data is in the form of a percentage of the daily volumes for each hour. Distributions are provided for all the counties within the region and by each facility type grouping. The hourly pattern data has been developed from 24-hour vehicle count data compiled by PennDOT's BPR, using the process identified in PennDOT's annual traffic data report. The same factors are also used to develop the MOVES hourly fraction file.

Vehicle Class

Emission rates within MOVES also vary significantly by vehicle type. MOVES produces emission rates for thirteen MOVES vehicle source input types. VMT, however, is input to MOVES by five HPMS vehicle groups (note that passenger cars and light trucks are grouped for input to MOVES. **Exhibit 5** summarizes the distinction between each classification scheme.

EXHIBIT 5: MOVES SOURCE TYPES AND HPMS VEHICLE GROUPS

<u>SOURCE TYPES</u>		<u>HPMS Class Groups</u>	
11	Motorcycle	10	Motorcycle
21	Passenger Car	25	Passenger Car
31	Passenger Truck	25	Passenger/Light Truck
32	Light Commercial Truck	40	Buses
41	Other Buses	50	Single Unit Trucks
42	Transit Bus	60	Combination Trucks
43	School bus		
51	Refuse Truck		
52	Single Unit Short-haul Truck		
53	Single Unit Long-haul Truck		
54	Motor Home		
61	Combination Short-haul Truck		
62	Combination Long-haul Truck		

The emissions estimation process includes a method to disaggregate the traffic volumes to the thirteen source types and then to recombine the estimates to the five HPMS vehicle classes. Vehicle type pattern data is used by PPSUITE to distribute the hourly roadway segment volumes among the thirteen MOVES source types. Similar to the 24-hour pattern data, this data contains percentage splits to each source type for every hour of the day. The vehicle type pattern data is developed from several sources of information:

- PennDOT truck percentages from the Roadway Management System (RMS) database.
- Hourly distributions for trucks and total traffic compiled by PennDOT’s BPR.
- School bus registration data from PennDOT’s Bureau of Motor Vehicles Registration Database.

Vehicle type percentages are also input into the capacity analysis section of PPSUITE to adjust the speeds in response to truck volume. Larger trucks take up more roadway space compared to an equal number of cars and light trucks, which is accounted for in the speed estimation process by adjusting capacity using information from the Transportation Research Board’s fifth edition of the *Highway Capacity Manual*. (<http://hcm.trb.org/>).

Vehicle Ages

Vehicle age distributions are input to MOVES for each of the thirteen source types. These distributions reflect the percentage of the vehicle fleet falling under each vehicle model year (MY) up to 40 years old (for MOVES5 modeling). The vehicle age distributions were prepared from the most recently available 2023 registration download from PennDOT’s Bureau of Motor Vehicles Registration Database. Due to data limitations, information for light duty vehicles and motorhome (including source types 11, 21, 31,

32 and 54) was used as local data for MOVES inputs, while heavy-duty vehicles (including source types 41, 42, 43, 51, 52, 53, 61, and 62) used the MOVES5 national default age distribution data.

Vehicle Population

The vehicle population information, including the number and age of vehicles, impacts forecasted start and evaporative emissions within MOVES. Similar to vehicle ages, MOVES requires vehicle populations for each of the thirteen source type categories. 2023 county vehicle registration data was used to estimate vehicle population for light-duty vehicles, transit buses, and school buses. Other heavy-duty vehicle population values were based on VMT for each source type using the vehicle mix and pattern data discussed previously. PPSUITE automatically applies MOVES default ratios of VMT and source type population (e.g. the number of miles per vehicle by source type) to the local VMT estimates to produce vehicle population.

For the preparation of source type population for other required conformity analysis years, base values were adjusted using forecast population and household data for the area. Growth rates were limited so as to not exceed the VMT growth assumptions.

Meteorology Data

Average monthly minimum temperatures, maximum temperatures, and humidity values are consistent with the regional State Implementation Plan (SIP) modeling conducted by DEP. The data was obtained from AccuWeather, Inc. (www.accuweather.com). The 10-year (2010-2020) average minimum and maximum monthly temperature and relative humidity values were obtained for each of the 10 airport locations in Pennsylvania.

Fuel Parameters

The MOVES5 default data assumptions have been reviewed and determined adequate to be used as inputs to the MOVES emissions modeling. Key assumptions include:

- 9.617 RVP used for summer months (based on MOVES5 defaults).
- 100% market share of 10% ethanol throughout the year for analysis years 2030, 2040 and 2050 (based on MOVES5 defaults).

AVFT Input

The AVFT (Alternate Vehicle Fuel and Technologies) input table is used to specify the fraction of fuel types capable of being used by model year and source type. Pennsylvania 2023 vehicle registration data was used to develop the AVFT input for light duty vehicles (source types 21, 31 and 32), school bus, transit bus and motor homes. Forecasts for electric vehicles (EV) were based on PennDOT's EV Roadmap for light duty vehicles (source types 21, 31 and 32). For all other source types and heavy-duty vehicles, EV assumptions from MOVES5 default AVFT inputs and forecasts were utilized.

I/M Program Parameters

The inspection maintenance (I/M) program inputs to the MOVES model are based on current programs within each county (all PA I/M programs are based on county boundaries). All analysis years include Pennsylvania's statewide I/M program. The default I/M program parameters included in MOVES were examined for each county and necessary changes were made to the default parameters to match the 2021 I/M program performance.

In order to assure that emission controls are working properly, vehicle inspection and maintenance (I/M) programs have been adopted in some nonattainment areas. These programs have the added benefit of improving the fuel efficiency of vehicles. The Pennsylvania inspection and maintenance (I/M) program was upgraded and expanded throughout the state with a phase-in period starting in September 2003 and fully implemented by June 2004.

The I/M program requirements vary by region (five regions) and include on-board diagnostics (OBD) technology that uses the vehicle's computer for model years 1996 and newer to identify potential engine and exhaust system problems that could affect emissions. The program, named PAOBDII, is implemented by region as follows:

- *Philadelphia Region* - Bucks, Chester, Delaware, Montgomery and Philadelphia Counties
[Includes tailpipe exhaust testing using ASM2015 or equipment for pre-1996 vehicles up to 25 years old]
- *Pittsburgh Region* - Allegheny, Beaver, Washington and Westmoreland Counties.
[Includes tailpipe exhaust testing using PA 97 equipment for pre-1996 vehicles up to 25 years old]
- *South Central and Lehigh Valley Region* - Berks, Cumberland, Dauphin, Lancaster, Lebanon, Lehigh, Northampton and York Counties.
[Includes gas cap and visual inspection only for 1975 through 1995 model years]
- *North Region* - Blair, Cambria, Centre, Erie, Lackawanna, Luzerne, Lycoming, and Mercer Counties.
[Gas cap and visual inspection only – No OBD]
- *Other 42 Counties* – Includes the remaining 42 counties not included above.
[Visual inspection only – No OBD]

Vehicle Technology Programs

Federal Programs

Current federal vehicle emissions control and fuel programs are incorporated into the MOVES5 software. The MOVES5 model includes the following new federal emission standard rules that were not in previous versions of MOVES:

- *Multi-Pollutant Rule for Model Year 2027 and Later Light-Duty and Medium-Duty Vehicles (LMDV)*, March 2024 (Model Years 2027-2032): This rule incorporates higher projected electric vehicle (EV) fractions and more stringent standards for CO₂, particulate matter (PM), non-methane organic gases (NMOG), and NO_x.

- *Greenhouse Gas Emissions Standards for Heavy-Duty Vehicles – Phase 3 (HDP3)*, March 2024 (Model Years 2027-2032): This rule includes higher projected EV fractions and updated energy consumption for heavy-duty EVs.

MOVES5 also includes the following recent on-road control programs that were already incorporated in MOVES4 or earlier versions:

- *Control of Air Pollution from New Motor Vehicles: Heavy-Duty Engine and Vehicle Standards, January 2023 (Model Year 2027 and later).*
- *Revised 2023 and Later Model Year Light-Duty Vehicle Greenhouse Gas Emissions Standards, December 2021 (Model Years 2023-2026).*
- *Safer Affordable Fuel Efficient (SAFE) Vehicles Rule, March 2020 (Model Years 2021-2026).*
- *Greenhouse Gas Emissions and Fuel Efficiency Standards for Medium-and Heavy-Duty Engines and Vehicles—Phase 2, October 2016 (Model Years 2019-2027).*
- *Tier-3 Vehicle Emissions and Fuel Standards Program, March 2014 (Model Years 2017-2025).*
- *2017 and Later Model Year Light-Duty Vehicle Greenhouse Gas Emissions and Corporate Average Fuel Economy Standards, October 2012 (Model Years 2017-2025).*
- *Greenhouse Gas Emissions Standards and Fuel Efficiency Standards for Medium-and Heavy-Duty Engines and Vehicles, September 2011 (Model Years 2014-2018).*
- *Regulation of Fuels and Fuel Additives: Modifications to Renewable Fuel Standard Program (RFS2), December 2010.*

Earlier foundational federal programs such as the Tier 2 Vehicle Emissions Standards and the 2007 Heavy-Duty Engine Rule are also inherently reflected in MOVES5 default emission rates. Modifications of default emission rates are required to reflect the early implementation of the National Low Emission Vehicle (NLEV) program in Pennsylvania. To reflect these impacts, EPA has released instructions and input files that can be used to model these impacts. The NLEV input database was created for Pennsylvania per EPA’s instructions and was used for this inventory.

State Programs

The Pennsylvania Clean Vehicles (PCV) Program, adopted in 1998, incorporated the California Low Emission Vehicle Regulations (CA LEV) by reference. The PCV Program allowed automakers to comply with the NLEV program as an alternative to this Pennsylvania program until MY2006. Beginning with MY2008, all “new” passenger cars and light-duty trucks with a gross vehicle weight rating (GVWR) of 8,500 pounds or less sold/leased and titled in Pennsylvania must be certified by the California Air Resources Board (CARB) or be certified for sale in all 50 states. For this program, a “new” vehicle is a qualified vehicle with an odometer reading less than 7,500 miles. DEP and PennDOT both work with the public, including manufacturers, vehicle dealers and consumers, to ensure that vehicles sold and purchased in Pennsylvania or vehicles purchased from other states by Pennsylvania residents comply with the requirements of the PCV Program, in order to be titled in Pennsylvania. Additionally, PennDOT ensures that paperwork for title and registration includes proof of CARB- or 50-state emission

certification or that the vehicle owner qualifies for an exemption to the requirements, as listed on PennDOT's MV-9 form and in the PCV Program regulation. When necessary, information from PennDOT's title and registration process may be used to audit vehicle title transactions to determine program compliance.

The impacts of this program are modeled for all analysis years beyond 2008 using the same instructions and tools downloaded for the early NLEV analysis. EPA provided input files to reflect state programs similar to the CAL LEV program. Modifications to those files were made to reflect a 2008 program start date for Pennsylvania.

Analysis Process Details

The previous sections have summarized the input data used for computing speeds and emission rates for this conformity analysis. This section explains how PPSUITE and MOVES use that input data to produce emission estimates. **Exhibit 6** provides a more detailed overview of the PPSUITE analysis procedure using the available traffic data information described in the previous sections.

VMT Preparation

Producing an emissions inventory with PPSUITE requires a process of disaggregation and aggregation. Data is available and used on a very detailed scale – individual roadway segments for each of the 24 hours of the day. This data needs to be processed individually to determine the distribution of vehicle hours of travel (VHT) by speed and then aggregated by vehicle class to determine the input VMT to the MOVES emission model. Key steps in the preparation of VMT include:

- *Assemble VMT* - The regional travel demand model contains the roadway segments, distances and travel volumes needed to estimate VMT. PPSUITE processes each segment by simply multiplying the assigned travel volume by the distance to obtain VMT.
- *Apply Seasonal Adjustments* – PPSUITE adjusts the traffic volumes to the appropriate analysis season. These traffic volumes are assembled by PPSUITE and extrapolated over the course of a year to produce the annual VMT file input to MOVES.
- *Disaggregate to Hours* - After seasonal adjustments are applied, the traffic volumes are distributed to each hour of the day. This allows for more accurate speed calculations (effects of congested hours) and allows PPSUITE to prepare the hourly VMT and speeds for input to MOVES.
- *Peak Spreading* - After distributing the daily volumes to each hour of the day, PPSUITE identifies hours that are unreasonably congested. For those hours, PPSUITE then spreads a portion of the volume to other hours within the same peak period, thereby approximating the “peak spreading” that normally occurs in such over-capacity conditions. This process also helps prevent hours with unreasonably congested speeds from disproportionately impacting emission calculations.
- *Disaggregation to Vehicle Types* - EPA requires VMT estimates to be prepared by the five HPMS vehicle groups, reflecting specific local characteristics. As described in the previous section, the hourly volumes are disaggregated into thirteen MOVES source types based on data from PennDOT,

in combination with MOVES defaults. The thirteen MOVES source types are then recombined into five HPMS vehicle classes.

- *Apply HPMS VMT Adjustments* - Volumes must also be adjusted to account for differences with the HPMS VMT totals, as described in previous sections. VMT adjustment factors are provided as inputs to PPSUITE and are applied to each of the roadway segment volumes. VMT adjustment factors are also applied to runs for future years.

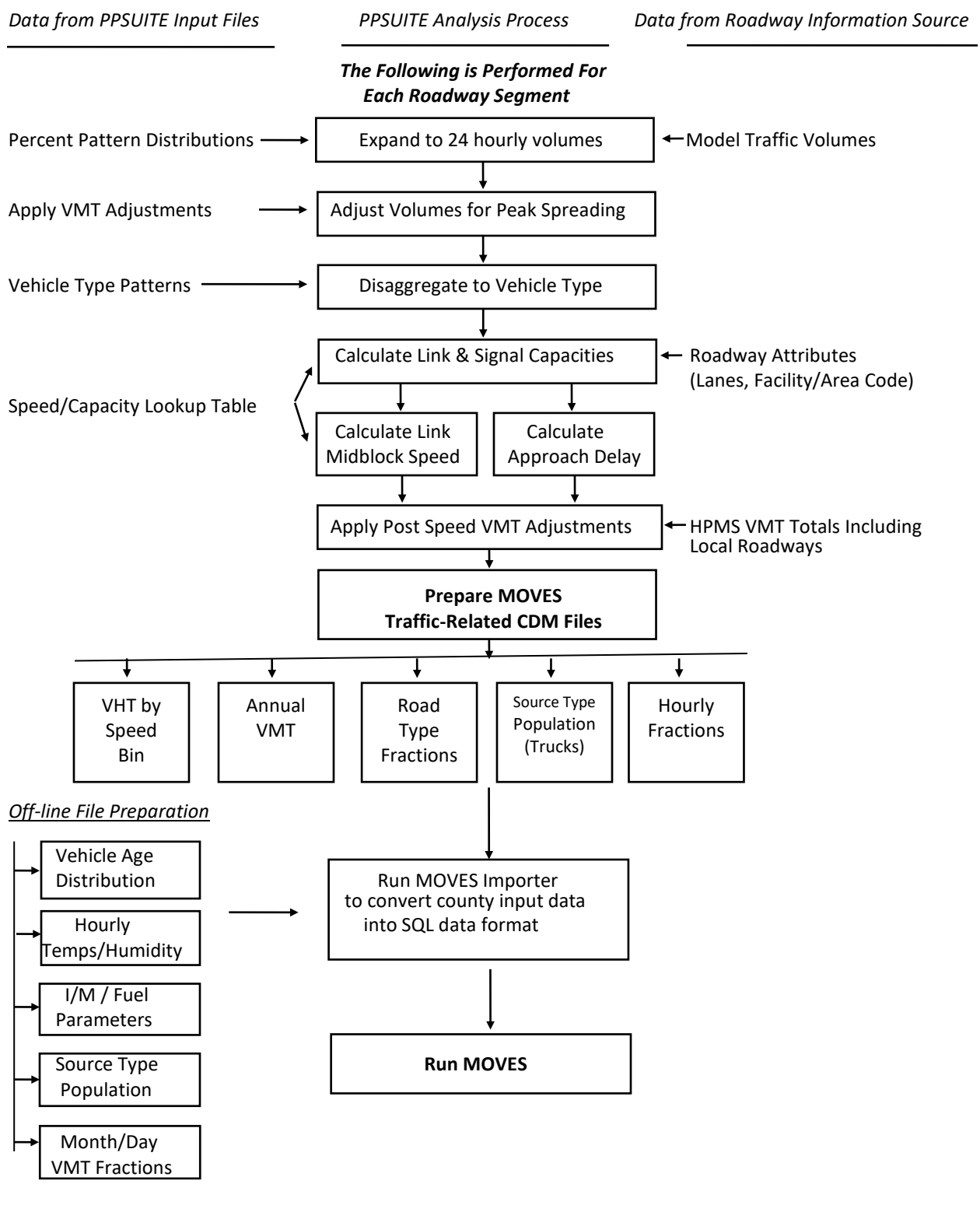
Speed Estimation

Emissions for many pollutants (including VOC and NO_x) vary significantly with travel speed. VOC emissions generally decrease as speed increases, while NO_x emissions decrease at low speeds and increase at higher speeds. Because emissions are so sensitive to speed changes, EPA recommends special attention be given to developing reasonable and consistent speed estimates. EPA also recommends that VMT be disaggregated into subsets that have roughly equal speeds, with separate emission factors for each subset. At a minimum, speeds should be estimated separately by road type.

The computational framework used for this analysis meets and exceeds the recommendation above relating to speed estimates. Speeds are individually calculated for each roadway segment and hour. Rather than accumulating the roadway segments into a particular road type and calculating an average speed, each individual link hourly speed is represented in the MOVES vehicle hours of travel (VHT) by a speed bin file. This MOVES input file allows the specification of a distribution of hourly speeds. For example, if 5% of a county's arterial VHT operates at 5 mph during the AM peak hour and the remaining 95% operates at 65 mph, this can be represented in the MOVES speed input file. For the roadway vehicle emissions calculations, speed distributions are input to MOVES by road type and source type for each hour of the day.

To calculate speeds, PPSUITE first obtains initial capacities (i.e., how much volume the roadway can serve before heavy congestion) and free-flow speeds (speeds assuming no congestion) to create a speed/capacity lookup table. As described previously, this data contains default roadway information indexed by the area and facility type codes. For areas with known characteristics, values can be directly coded to the database and the speed/capacity default values can be overridden. For most areas where known information is unavailable, the speed/capacity lookup tables provide valuable default information regarding speeds, capacities, signal characteristics, and other capacity adjustment information used for calculating congested delays and speeds. The result of this process is an estimated average travel time for each hour of the day for each highway segment. The average travel time multiplied by traffic volume produces vehicle hours of travel (VHT).

EXHIBIT 6: PPSUITE SPEED/EMISSION ESTIMATION PROCEDURE



Developing the MOVES Traffic Input Files

The PPSUITE software is responsible for producing the following MOVES input files during any analysis run:

- VMT by HPMS vehicle class.
- VHT by speed bin.
- Road type distributions.
- Hourly VMT fractions.

These files are text formatted files with a *.csv extension. The files are provided as inputs within the MOVES County Data Manager (CDM) and are described below:

- *VMT Input File*: VMT is the primary traffic input affecting emission results. The roadway segment distances and traffic volumes are used to prepare estimates of VMT. PPSUITE performs these calculations and outputs the MOVES annual VMT input file to the County Data Manager (CDM). The annual VMT is computed by multiplying the travel model roadway adjusted VMT by 365 days (366 days in a leap year).
- *VHT by Speed Bin File*: As described in the previous section, the PPSUITE software prepares the MOVES VHT by speed bin file, which summarizes the distribution of speeds across all links into each of the 16 MOVES speed bins for each hour of the day by road type. This robust process is consistent with the methods and recommendations provided in EPA's technical guidance for the MOVES model (<http://www.epa.gov/otaq/models/moves/>) and ensures that MOVES emission rates are used to the fullest extent.
- *Road Type Distributions*: Within MOVES, typical drive cycles and associated operating conditions vary by roadway type. MOVES defines five different roadway types as follows:
 - 1 Off-Network.
 - 2 Rural Restricted Access.
 - 3 Rural Unrestricted Access.
 - 4 Urban Restricted Access.
 - 5 Urban Unrestricted Access.

For this analysis, the MOVES road type distribution file is automatically generated by PPSUITE using defined equivalencies. The off-network road type includes emissions from vehicle starts, extended idling, and evaporative emissions. Off-network activity in MOVES is primarily determined by the Source Type Population input.

MOVES Runs

After computing speeds and aggregating VMT and VHT, PPSUITE prepares traffic-related inputs needed to run EPA’s MOVES software. Additional required MOVES inputs are prepared externally from the processing software and include temperatures, I/M program parameters, fuel characteristics, vehicle fleet age distributions, and source type population. The MOVES county importer is run in batch mode. This program converts all data files into the SQL format used by the MOVES model. At that point, a MOVES run specification file (*.mrs) is created which specifies options and key data locations for the run. The MOVES run is then executed in batch mode. A summary of key MOVES run specification settings is shown in **Exhibit 7**. MOVES can be executed using either an inventory or rate-based approach. For this analysis, MOVES is applied using the *inventory-based* approach. Using this approach, actual VMT and population are provided as inputs to the model; MOVES is responsible for producing the total emissions for the region.

EXHIBIT 7: MOVES RUN SPECIFICATION FILE PARAMETER SETTINGS

Parameter	Setting
MOVES Version	MOVES5
MOVES Default Database Version	MOVESDB20241112
Scale	COUNTY
Analysis Mode	Inventory
Time Span	July Weekday Runs: July month, Weekday, 24 hours
Time Aggregation	Hour
Geographic Selection	County [FIPS]
Vehicle Selection	All source types Gasoline, Diesel, CNG, E85, Electricity
Road Type	All road types including off-network
Pollutants and Processes	VOC, NO _x
Database selection	Early NLEV database PA-Specific CA LEV program database
General Output	Units: Emission = grams; Distance = miles; Energy = Million BTU
Output Emissions Detail	Time = Hour, Emissions by Process ID, Source Type and Road Type

Conformity Analysis Results

Transportation conformity emission analyses of the TIP and L RTP have been completed for Berks County. The analyses were performed according to the requirements of the Federal transportation conformity rule at 40 CFR Part 93, Subpart A. The analyses utilized methodologies, assumptions and data as presented in previous sections. Interagency consultation has been used to determine applicable emission models, analysis years and emission tests.

Emission Tests

There are currently no approved SIP MVEBs for Berks County under 2008 8-hour ozone NAAQS. However, the County has an approved SIP revision establishing MVEBs under the 1997 8-hour ozone NAAQS. The MVEBs were originally approved on January 14, 2008 (73 FR 2162) and subsequently revised on March 31, 2014 (79 FR 17875). As required, the latest revised budgets are used for the ozone conformity test. The ozone conformity analysis has been conducted to evaluate emissions in comparison to the applicable ozone MVEBs summarized in **Exhibit 8**.

EXHIBIT 8: 8-HOUR OZONE MOTOR VEHICLE EMISSION BUDGETS

County / Pollutant	2009 Budget (tons/day)	2018 Budget (tons/day)
VOC	13.1	7.5
NO_x	29.0	14.9

Analysis Years

Section 93.119(g) of the Federal Transportation Conformity Regulations requires that emissions analyses be conducted for specific analysis years as follows:

- A near-term year, one to five years in the future.
- The MPO’s horizon year for long range planning.
- All established MVEB years.
- Attainment year of the standard if within timeframe of the conformity analysis.
- An intermediate year or years such that if there are two years in which analysis is performed, the two analysis years are no more than ten years apart.

All analysis years were determined through the interagency consultation process. **Exhibit 9** provides the analysis years used for this conformity analysis.

EXHIBIT 9: TRANSPORTATION CONFORMITY ANALYSIS YEARS

Analysis Year	Description
2030	Near Term Year – Last Year of TIP
2040	Interim Year
2050	LRTP Horizon Year

Regionally Significant Highway Projects

For the purposes of conformity analysis, model highway networks are created for each analysis year. Regionally significant projects from the TIP were coded onto the networks. Detailed assessments were only performed for those new projects which may have a significant effect on emissions in accordance with 40 CFR Parts 51 and 93. Only those projects which would increase capacity or significantly impact vehicular speeds were considered. Projects such as bridge replacements and roadway restoration projects, which constitute the majority of the TIP, have been excluded from consideration since they are considered exempt under 40 CFR 93.126-127. A list of highway projects is shown in **Attachment A**.

Analysis Results

An emissions analysis has been completed for the 2008 8-hour ozone NAAQS. **Exhibit 10** summarizes the Berks County ozone emission results for a summer weekday in each analysis year. All years are lower than the applicable conformity budgets established in the regional maintenance plan for the 1997 ozone NAAQS. A detailed emission summary is also provided in **Attachment B**. Example MOVES importer (XML) and run specification (MRS) files are provided in **Attachment C**.

EXHIBIT 10: OZONE EMISSION ANALYSIS RESULTS AND CONFORMITY TEST
(Summer Weekday)

Pollutant	2018 BUDGET (tons/day)	2030 (tons/day)	2040 (tons/day)	2050 (tons/day)
VOC	7.5	2.01	1.45	1.38
NO _x	14.9	3.40	1.99	2.04
Conformity Result		Pass	Pass	Pass

Conformity Determination

Financial Constraint

The planning regulations, Sections 450.324(f)(11) and 450.326(j), require the TIP and LRTP to be financially constrained while the existing transportation system is being adequately operated and maintained. Only projects for which construction and operating funds are reasonably expected to be available are included. The RATS MPO, in conjunction with PennDOT, FHWA and FTA, has developed an estimate of the cost to maintain and operate existing roads, bridges and transit systems in Berks County and has compared the cost with the estimated revenues and maintenance needs of the new roads over the same period. The TIP and LRTP have been determined to be financially constrained.

Public Participation

The TIP and LRTP have addressed the public participation requirements as well as the comment and response requirements according to the procedures established in compliance with 23 CFR Part 450, RATS Public Participation Plan, and Pennsylvania's Conformity SIP. The draft documents were made available for a 30-day public review and comment period from March 20 – April 24, 2026. Four (4) Public Meetings (2 in-person, 2 virtual) were also held within this comment period. MPO action to adopt the conformity determination was taken on May 21, 2026.

Conformity Statement

The conformity rule requires that the TIP and LRTP conform to the applicable SIP(s) and be adopted by the MPO/RPO before any federal agency may approve, accept, or fund projects. Conformity is determined by applying criteria outlined in the transportation conformity regulations to the analysis.

The RATS MPO TIP and LRTP are found to conform to the applicable air quality SIP(s) or EPA conformity requirements. This finding of conformity positively reflects on the efforts of the RATS MPO and its partners in meeting the regional air quality goals, while maintaining and building an effective transportation system.

Resources

MOVES Model

Modeling Page within EPA's Office of Mobile Sources Website contains a downloadable model, MOVES users guide and other information. See (<http://www.epa.gov/omswww/models.htm>)

MOVES5 Policy Guidance: Use of MOVES for State Implementation Plan Development, Transportation Conformity, General Conformity, and Other Purposes, US EPA Office of Transportation and Air Quality, EPA-420-B-24-038, November 2024.

MOVES5 Technical Guidance: Using MOVES to Prepare Emission Inventories for State Implementation Plans and Transportation Conformity, US EPA Office of Transportation and Air Quality, EPA-420-B-24-043, November 2024.

Traffic Engineering

Highway Capacity Manual, fifth edition (HCM2010), Transportation Research Board, presents current knowledge and techniques for analyzing the transportation system.

Traffic Data Collection and Factor Development Report, 2023 Data, Pennsylvania Department of Transportation, Bureau of Planning and Research.

Highway Vehicle Emissions Analysis Glossary

AADT: Average Annual Daily Traffic, average of ALL days

CAA: Clean Air Act as amended

CARB: California Air Resources Board

CFR: Code of Federal Regulations

County Data Manager (CDM): User interface developed to simplify importing specific local data for a single county or a user-defined custom domain without requiring direct interaction with the underlying SQL database in the MOVES emission model

DEP: Department of Environmental Protection.

Emission rate or factor: Expresses the amount of pollution emitted per unit of activity. For highway vehicles, this is usually expressed in grams of pollutant emitted per mile driven

EPA: Environmental Protection Agency.

FC: Functional code. Applied to road segments to identify their type (freeway, local, etc.)

FHWA: Federal Highway Administration

FR: Federal Register

FTA: Federal Transit Administration

Growth factor: Factor used to convert volumes to future years

HPMS: Highway Performance Monitoring System

I/M: Vehicle emissions inspection/maintenance programs are required in certain areas of the country. The programs ensure that vehicle emission controls are in good working order throughout the life of the vehicle. The programs require vehicles to be tested for emissions. Most vehicles that do not pass must be repaired.

LRTP: Long Range Transportation Plan

MOVES: Motor Vehicle Emission Simulator. The latest model EPA has developed to estimate emissions from highway vehicles

MVEB: motor vehicle emissions budget

NAAQS: National Ambient Air Quality Standard

NTD: National Transit Database

Pattern data: Extrapolations of traffic patterns (such as how traffic volume on road segment types varies by time of day, or what kinds of vehicles tend to use a road segment type) from segments with observed data to similar segments

PPSUITE: Post-Processor for Air Quality. A set of programs that estimate speeds and prepares MOVES inputs and processes MOVES outputs

Road Type: Functional code, applied in data management to road segments to identify their type (rural/urban highways, rural/urban arterials, etc.)

RMS: Roadway Management System

SIP: State Implementation Plan

Source Type: One of thirteen vehicle types used in MOVES modeling

TAZ: Traffic Analysis Zone System

TIP: Transportation Improvement Program

VHT: Vehicle hours traveled

VMT: Vehicle miles traveled. In modeling terms, it is the simulated traffic volumes multiplied by link length

VOC: volatile organic compound emissions

ATTACHMENT A

Project List

**2027-2030 TIP and 2050 Long Range Transportation Plan (LRTP)
Air Quality Significant Projects**

Note The RATS MPO LRTP includes projects identified in PennDOT's 12-Year Program (TYP)

MPMS	Name	Description
61972	US 222 Widening	This project involves the widening of US Route 222 from Schaeffer Road to the Kutztown Bypass in Richmond, Maiden creek and Maxatawny Townships, Berks County. The highway will be widened to four lanes, a median barrier will be installed, as well as roundabouts at Pleasant Hills Road and Richmond Road.
72814	West Shore (US 422) Reconstruction Phase 2	This project involves highway reconstruction/widening of US Route 422 (the West Shore Bypass) from PA 12 to the Schuylkill River Bridge east of Interstate 176 in Wyomissing and West Reading Boroughs, the City of Reading, Cumru and Exeter Townships, Berks County. The project will include widening of the roadway for a length of 5.5 miles to accommodate three travel lanes in each direction between the Warren Street Bypass and the Interstate 176 interchange. There will also be reconstruction of four travel lanes between the Interstate 176 interchange and the Schuylkill River Bridge east of the Interstate 176 interchange. The Penn Street and Lancaster Avenue interchanges will be realigned and reconstructed, while the Wyomissing and Interstate 176 interchanges will be reconstructed. This project will also include reconstruction of the Bingaman Street Bridge. This project includes completion of preliminary engineering for the entire corridor. Details for Phase 1 can be found under MPMS 114439.
79467	SR 12 Elizabeth Avenue	This project involves safety improvements along the State Route 12 corridor from Hill View Road/Elizabeth Avenue to Skyline Drive (SR 2027) in Alsace Township, Berks County. The proposed corridor improvements include shoulder widening, utility relocation, embankment removal to improve curve sight distance, and super elevate curves. Additional proposed improvements include a hybrid roundabout at SR 12 and Hill View Road / Elizabeth Avenue, a traffic signal with realignment at Skyline Drive, and addition of a left turn lane for Route 12 west at Skyline Drive.
90569	SR 222 & Long Lane	This project involves the construction of a roundabout on US Route 222 and Long Lane (State Route 1024) to improve safety and reduce congestion in Maxatawny Township.
97234	222 Kutztown Bypass to Lehigh County Line	This project involves the preliminary engineering phase for widening to two lanes in both directions of US Route 222 for 3.81 miles from the US Route 222 Kutztown Bypass north to Kutztown Road at the Berks/Lehigh County Line in Maxatawny Township.
105954	State Hill Rd from Colony Dr. to SR 222 SB Ramps	Corridor safety improvements along State Route 3023 (State Hill Road) between the State Route 222 southbound on-ramp and Colony Drive in Wyomissing Borough. Improvements to be considered include widening, access management, roundabout(s), traffic signal updates and coordination.
105963	Route 662 and Oley Turnpike Intersection	Construct a roundabout at the intersection of State Route 622 (Memorial Highway) and State Route 2020 (Oley Turnpike Road).

MPMS	Name	Description
110008	222 SB Auxiliary Lane- Wyomissing	This project involves the addition of an auxiliary lane along US Route 222 Southbound between Paper Mill Road and the US Routes 222 and 422 Interchanges in Wyomissing Borough, Berks County.
110075	SR 422 Ben Franklin Congested Corridor	Upgrade of 8 signalized intersections to be more traffic responsive to improve traffic flow between SR 2025 (Monocacy Creek Road) and River Bridge Road on SR 422 also known as Ben Franklin Highway in Amity Township.
114439	West Shore Bypass – Phase 1	This project involves highway reconstruction/widening of US Route 422 (the West Shore Bypass) including complete reconstruction to six lanes beginning at Buttonwood Street overpass in West Reading through the Lancaster Avenue interchange in the City of Reading. This reconstruction includes reconfiguration of the Penn Street/Penn Avenue interchange and the Lancaster Avenue interchange, reconstruction of the Bingaman Street Bridge and associated bicycle and pedestrian connections. The project also includes replacement of the Schuylkill River Bridge and 422 over Norfolk Southern Railroad bridges west of the Interstate 176 interchange, including reconstruction of the I-176 N to US 422 W on-ramp in Cumru Township.
117603	State Hill Road - SR 222 SB to Norfolk Southern RR	This project involves improvements to State Hill Road (SR 3023) intersections with State Route 222 southbound ramps, State Route 222 northbound ramps and Spring Street/Granite Point Drive with addition of a roundabout at State Route 222 southbound and addition of a roundabout combining the State Route 222 northbound and Spring Street intersections, in Wyomissing Borough.
120974	SR 183 / Shartlesville Road Intersection	This project involves signalization with left and right turn lanes to provide intersection control at the intersection of Bernville Road (State Route 183) and Shartlesville Road (State Route 4011), installation of a roundabout at the Bernville Road (State Route 183) and North Heidelberg Road (State Route 3033) intersection, and installation of a Two-Way Center Left Turn Lane from Washington Street to 2nd Street, in Jefferson Township, Penn Township, and the Borough of Bernville.
123619	SR 422 Ben Franklin Congested Corridor West	This project involves signal improvements of 5 signalized intersections to improve traffic flow on SR 422 also known as Ben Franklin Highway in Amity and Exeter Townships.

ATTACHMENT B
Detailed Emission Results

Detailed Emission Results for Ozone Analysis

2030 Ozone by Road Type

County	Road Type	Summer Daily VMT	Speed (mph)	Emissions (Tons/Day)	
				VOC	NOx
Berks	Off-Network	N/A	N/A	1.424	0.719
	Rural Unrestricted	2,690,878	62.4	0.094	0.962
	Rural UnRestricted	2,825,647	37.7	0.128	0.509
	Urban Restricted	2,708,065	55.5	0.089	0.444
	Urban UnRestricted	4,886,380	29.4	0.269	0.763
	Subtotal	13,110,970		2.005	3.398
Off-Model Project Emission Benefits				0.000	0.000
Region Total		13,110,970	(Kg/Day)	2.005	3.398
				1,819	3,083

2030 Ozone by Source Type

County	Source Type	Summer Daily VMT	Emissions (Tons/Day)	
			VOC	NOx
Berks	Motorcycle	80,775	0.213	0.047
	Passenger Car	9,573,050	1.192	0.321
	Passenger Truck	1,647,527	0.332	0.273
	Light Commercial Truck	156,114	0.037	0.037
	Intercity Bus	30,628	0.010	0.095
	Transit Bus	26,109	0.009	0.033
	School Bus	17,167	0.005	0.023
	Refuse Truck	5,706	0.001	0.013
	Single Unit Short-haul Truck	550,312	0.106	0.378
	Single Unit Long-haul Truck	36,852	0.004	0.021
	Motor Home	30,903	0.024	0.020
	Combination Short-haul Truck	357,472	0.019	0.733
	Combination Long-haul Truck	598,354	0.053	1.404
	Subtotal	13,110,970	2.005	3.398
Off-Model Project Emission Benefits			0.000	0.000
Region Total		13,110,970	2.005	3.398
		(Kg/Day)	1,819	3,083

2030 Ozone by Emission Process

County	Emission Process	Emissions (Tons/Day)	
		VOC	NOx
Berks	Running Exhaust	0.299	2.942
	Start Exhaust	0.254	0.352
	Brakewear	0.000	0.000
	Tirewear	0.000	0.000
	Evap Permeation	0.186	0.000
	Evap Fuel Vapor Venting	0.498	0.000
	Evap Fuel Leaks	0.747	0.000
	Crankcase Running Exhaust	0.012	0.027
	Crankcase Start Exhaust	0.003	0.000
	Crankcase Extended Idle Exhaust	0.000	0.001
	Extended Idle Exhaust	0.005	0.065
	Auxiliary Power Exhaust	0.001	0.012
	Subtotal	2.005	3.398
Off-Model Project Emission Benefits		0.000	0.000
Region Total		2.005	3.398
	(Kg/Day)	1,819	3,083

2040 Ozone by Road Type

County	Road Type	Summer Daily VMT	Speed (mph)	Emissions (Tons/Day)	
				VOC	NOx
Berks	Off-Network	N/A	N/A	0.992	0.583
	Rural Restricted	3,512,159	62.4	0.080	0.581
	Rural UnRestricted	3,372,625	37.2	0.111	0.270
	Urban Restricted	2,932,910	55.1	0.068	0.215
	Urban UnRestricted	5,048,648	29.2	0.203	0.341
	Subtotal	14,866,343		1.454	1.991
Off-Model Project Emission Benefits				0.000	0.000
Region Total		14,866,343	(Kg/Day)	1.454	1.991
				1,319	1,806

2040 Ozone by Source Type

County	Source Type	Summer Daily VMT	Emissions (Tons/Day)	
			VOC	NOx
Berks	Motorcycle	90,793	0.208	0.053
	Passenger Car	10,760,317	0.829	0.140
	Passenger Truck	1,851,826	0.224	0.097
	Light Commercial Truck	175,486	0.024	0.016
	Intercity Bus	42,173	0.009	0.058
	Transit Bus	27,527	0.008	0.021
	School Bus	18,721	0.004	0.013
	Refuse Truck	6,865	0.000	0.009
	Single Unit Short-haul Truck	662,369	0.075	0.283
	Single Unit Long-haul Truck	44,381	0.003	0.013
	Motor Home	36,484	0.018	0.008
	Combination Short-haul Truck	429,916	0.013	0.458
	Combination Long-haul Truck	719,484	0.036	0.823
	Subtotal	14,866,343	1.454	1.991
Off-Model Project Emission Benefits			0.000	0.000
Region Total		14,866,343	1.454	1.991
		(Kg/Day)	1,319	1,806

2040 Ozone by Emission Process

County	Emission Process	Emissions (Tons/Day)	
		VOC	NOx
Berks	Running Exhaust	0.209	1.654
	Start Exhaust	0.164	0.286
	Brakewear	0.000	0.000
	Tirewear	0.000	0.000
	Evap Permeation	0.081	0.000
	Evap Fuel Vapor Venting	0.308	0.000
	Evap Fuel Leaks	0.682	0.000
	Crankcase Running Exhaust	0.004	0.007
	Crankcase Start Exhaust	0.002	0.000
	Crankcase Extended Idle Exhaust	0.000	0.000
	Extended Idle Exhaust	0.002	0.026
	Auxiliary Power Exhaust	0.001	0.018
	Subtotal	1.454	1.991
Off-Model Project Emission Benefits		0.000	0.000
Region Total		1.454	1.991
	(Kg/Day)	1,319	1,806

2050 Ozone by Road Type

County	Road Type	Summer Daily VMT	Speed (mph)	Emissions (Tons/Day)	
				VOC	NOx
Berks	Off-Network	N/A	N/A	0.890	0.632
	Rural Restricted	4,570,973	59.3	0.095	0.651
	Rural UnRestricted	4,348,812	36.3	0.131	0.280
	Urban Restricted	3,254,005	53.9	0.068	0.197
	Urban UnRestricted	5,278,180	28.8	0.192	0.279
	<i>Subtotal</i>	<i>17,451,970</i>		<i>1.375</i>	<i>2.040</i>
Off-Model Project Emission Benefits				0.000	0.000
Region Total		17,451,970	(Kg/Day)	1.375	2.040
				1,248	1,851

2050 Ozone by Source Type

County	Source Type	Summer Daily VMT	Emissions (Tons/Day)	
			VOC	NOx
Berks	Motorcycle	105,832	0.222	0.062
	Passenger Car	12,542,738	0.755	0.108
	Passenger Truck	2,158,592	0.194	0.067
	Light Commercial Truck	204,540	0.021	0.013
	Intercity Bus	57,508	0.011	0.058
	Transit Bus	30,088	0.008	0.017
	School Bus	20,726	0.004	0.011
	Refuse Truck	8,416	0.000	0.009
	Single Unit Short-haul Truck	813,066	0.083	0.314
	Single Unit Long-haul Truck	54,458	0.003	0.012
	Motor Home	44,929	0.018	0.005
	Combination Short-haul Truck	527,701	0.015	0.504
	Combination Long-haul Truck	883,375	0.042	0.862
	<i>Subtotal</i>	<i>17,451,970</i>	<i>1.375</i>	<i>2.040</i>
Off-Model Project Emission Benefits			0.000	0.000
Region Total		17,451,970	1.375	2.040
		(Kg/Day)	1,248	1,851

2050 Ozone by Emission Process

County	Emission Process	Emissions (Tons/Day)	
		VOC	NOx
Berks	Running Exhaust	0.219	1.704
	Start Exhaust	0.145	0.292
	Brakewear	0.000	0.000
	Tirewear	0.000	0.000
	Evap Permeation	0.069	0.000
	Evap Fuel Vapor Venting	0.273	0.000
	Evap Fuel Leaks	0.662	0.000
	Crankcase Running Exhaust	0.002	0.002
	Crankcase Start Exhaust	0.002	0.000
	Crankcase Extended Idle Exhaust	0.000	0.000
	Extended Idle Exhaust	0.003	0.019
	Auxiliary Power Exhaust	0.001	0.024
	<i>Subtotal</i>	<i>1.375</i>	<i>2.040</i>
Off-Model Project Emission Benefits		0.000	0.000
Region Total		1.375	2.040
	(Kg/Day)	1,248	1,851

ATTACHMENT C

**Sample MOVES Data Importer (XML) Input File
and
Run Specification (MRS) Input File**

(Sample for 2030 July Weekday)

MOVES County Data Manager Importer File – July Weekday Run (MOVESIMPORTER.XML)

```

<moves>
  <importer mode="county" >
    <filters>
      <geographicselections>
        <geographicselection type="COUNTY" key="42011" description="Berks County, PA (42011)"/>
      </geographicselections>
      <timespan>
        <year key="2030"/>
      </timespan>
      <month id="07"/>
      <day id="5"/>
        <beginhour id="1"/>
        <endhour id="24"/>
        <aggregateBy key="Hour"/>
      </timespan>
      <onroadvehicleselections>
        <onroadvehicleselection fueltypeid="1" fueltypedesc="Gasoline" sourcetypeid="11" sourcetyname="Motorcycle"/>
        <onroadvehicleselection fueltypeid="1" fueltypedesc="Gasoline" sourcetypeid="21" sourcetyname="Passenger Car"/>
        <onroadvehicleselection fueltypeid="2" fueltypedesc="Diesel Fuel" sourcetypeid="21" sourcetyname="Passenger Car"/>
        <onroadvehicleselection fueltypeid="5" fueltypedesc="Ethanol (E-85)" sourcetypeid="21" sourcetyname="Passenger Car"/>
        <onroadvehicleselection fueltypeid="9" fueltypedesc="Electricity" sourcetypeid="21" sourcetyname="Passenger Car"/>
        <onroadvehicleselection fueltypeid="1" fueltypedesc="Gasoline" sourcetypeid="31" sourcetyname="Passenger Truck"/>
        <onroadvehicleselection fueltypeid="2" fueltypedesc="Diesel Fuel" sourcetypeid="31" sourcetyname="Passenger Truck"/>
        <onroadvehicleselection fueltypeid="5" fueltypedesc="Ethanol (E-85)" sourcetypeid="31" sourcetyname="Passenger Truck"/>
        <onroadvehicleselection fueltypeid="9" fueltypedesc="Electricity" sourcetypeid="31" sourcetyname="Passenger Truck"/>
        <onroadvehicleselection fueltypeid="1" fueltypedesc="Gasoline" sourcetypeid="32" sourcetyname="Light Commercial Truck"/>
        <onroadvehicleselection fueltypeid="2" fueltypedesc="Diesel Fuel" sourcetypeid="32" sourcetyname="Light Commercial Truck"/>
        <onroadvehicleselection fueltypeid="5" fueltypedesc="Ethanol (E-85)" sourcetypeid="32" sourcetyname="Light Commercial Truck"/>
        <onroadvehicleselection fueltypeid="9" fueltypedesc="Electricity" sourcetypeid="32" sourcetyname="Light Commercial Truck"/>
        <onroadvehicleselection fueltypeid="1" fueltypedesc="Gasoline" sourcetypeid="41" sourcetyname="Other Buses"/>
        <onroadvehicleselection fueltypeid="2" fueltypedesc="Diesel Fuel" sourcetypeid="41" sourcetyname="Other Buses"/>
        <onroadvehicleselection fueltypeid="3" fueltypedesc="Compressed Natural Gas (CNG)" sourcetypeid="41" sourcetyname="Other
Buses"/>
        <onroadvehicleselection fueltypeid="9" fueltypedesc="Electricity" sourcetypeid="41" sourcetyname="Other Buses"/>
        <onroadvehicleselection fueltypeid="1" fueltypedesc="Gasoline" sourcetypeid="42" sourcetyname="Transit Bus"/>
        <onroadvehicleselection fueltypeid="2" fueltypedesc="Diesel Fuel" sourcetypeid="42" sourcetyname="Transit Bus"/>
        <onroadvehicleselection fueltypeid="3" fueltypedesc="Compressed Natural Gas (CNG)" sourcetypeid="42" sourcetyname="Transit
Bus"/>
        <onroadvehicleselection fueltypeid="9" fueltypedesc="Electricity" sourcetypeid="42" sourcetyname="Transit Bus"/>
        <onroadvehicleselection fueltypeid="1" fueltypedesc="Gasoline" sourcetypeid="43" sourcetyname="School Bus"/>
        <onroadvehicleselection fueltypeid="2" fueltypedesc="Diesel Fuel" sourcetypeid="43" sourcetyname="School Bus"/>
        <onroadvehicleselection fueltypeid="3" fueltypedesc="Compressed Natural Gas (CNG)" sourcetypeid="43" sourcetyname="School
Bus"/>
        <onroadvehicleselection fueltypeid="9" fueltypedesc="Electricity" sourcetypeid="43" sourcetyname="School Bus"/>
        <onroadvehicleselection fueltypeid="1" fueltypedesc="Gasoline" sourcetypeid="51" sourcetyname="Refuse Truck"/>
        <onroadvehicleselection fueltypeid="2" fueltypedesc="Diesel Fuel" sourcetypeid="51" sourcetyname="Refuse Truck"/>
        <onroadvehicleselection fueltypeid="3" fueltypedesc="Compressed Natural Gas (CNG)" sourcetypeid="51" sourcetyname="Refuse
Truck"/>
        <onroadvehicleselection fueltypeid="9" fueltypedesc="Electricity" sourcetypeid="51" sourcetyname="Refuse Truck"/>
        <onroadvehicleselection fueltypeid="1" fueltypedesc="Gasoline" sourcetypeid="52" sourcetyname="Single Unit Short-haul Truck"/>
        <onroadvehicleselection fueltypeid="2" fueltypedesc="Diesel Fuel" sourcetypeid="52" sourcetyname="Single Unit Short-haul Truck"/>
        <onroadvehicleselection fueltypeid="3" fueltypedesc="Compressed Natural Gas (CNG)" sourcetypeid="52" sourcetyname="Single Unit
Short-haul Truck"/>
        <onroadvehicleselection fueltypeid="9" fueltypedesc="Electricity" sourcetypeid="52" sourcetyname="Single Unit Short-haul Truck"/>
        <onroadvehicleselection fueltypeid="1" fueltypedesc="Gasoline" sourcetypeid="53" sourcetyname="Single Unit Long-haul Truck"/>
        <onroadvehicleselection fueltypeid="2" fueltypedesc="Diesel Fuel" sourcetypeid="53" sourcetyname="Single Unit Long-haul Truck"/>
        <onroadvehicleselection fueltypeid="3" fueltypedesc="Compressed Natural Gas (CNG)" sourcetypeid="53" sourcetyname="Single Unit
Long-haul Truck"/>
        <onroadvehicleselection fueltypeid="9" fueltypedesc="Electricity" sourcetypeid="53" sourcetyname="Single Unit Long-haul Truck"/>
        <onroadvehicleselection fueltypeid="1" fueltypedesc="Gasoline" sourcetypeid="54" sourcetyname="Motor Home"/>
        <onroadvehicleselection fueltypeid="2" fueltypedesc="Diesel Fuel" sourcetypeid="54" sourcetyname="Motor Home"/>
        <onroadvehicleselection fueltypeid="3" fueltypedesc="Compressed Natural Gas (CNG)" sourcetypeid="54" sourcetyname="Motor
Home"/>
      </onroadvehicleselections>
    </filters>
  </importer >
</moves>

```



```

    <AVFT>
      <filename>C:\BCTMMOVES5\IN_AQ\MOVES\Fuel\MOVES5\AVFT_S1\42011_avft_MOVES5.csv</filename>
    </AVFT>
  </parts>
</fuel>
  <zonemonthhour>
    <description><![CDATA[]]></description>
    <parts>
      <zoneMonthHour>
        <filename>C:\BCTMMOVES5\IN_AQ\MOVES\Meteorology\2008\42011_2008_met.csv</filename>
      </zoneMonthHour>
    </parts>
  </zonemonthhour>
  <roadtypedistribution>
    <description><![CDATA[]]></description>
    <parts>
      <roadTypeDistribution>
<filename>C:\BCTMMOVES5\BERK23_2030\\AQ\JULY\\42011_2030_07_05_Ozone\CDM\roadTypeDistribution.csv</filename>
      </roadTypeDistribution>
    </parts>
  </roadtypedistribution>
  <sourcetypepopulation>
    <description><![CDATA[]]></description>
    <parts>
      <sourceTypeYear>
<filename>C:\BCTMMOVES5\BERK23_2030\\AQ\JULY\\42011_2030_07_05_Ozone\CDM\SourceTypePopulation.csv</filename>
      </sourceTypeYear>
    </parts>
  </sourcetypepopulation>
  <vehicletypevmt>
    <description><![CDATA[]]></description>
    <parts>
      <hpmsVTypeYear>
<filename>C:\BCTMMOVES5\BERK23_2030\\AQ\JULY\\42011_2030_07_05_Ozone\CDM\hpmsVTypeYear.csv</filename>
      </hpmsVTypeYear>
      <monthvmtfraction>
<filename>C:\BCTMMOVES5\IN_AQ\MOVES\MonthDayHourFractions\MOVES5\2023\Month\42011_2023_MonthVMTFraction_NonLeap.csv</filename>
      </monthvmtfraction>
      <dayvmtfraction>
<filename>C:\BCTMMOVES5\IN_AQ\MOVES\MonthDayHourFractions\MOVES5\2023\Day\42011_2023_dayvmtfraction.csv</filename>
      </dayvmtfraction>
      <hourvmtfraction>
<filename>C:\BCTMMOVES5\BERK23_2030\\AQ\JULY\\42011_2030_07_05_Ozone\CDM\hourvmtfraction.csv</filename>
      </hourvmtfraction>
    </parts>
  </vehicletypevmt>
  <starts>
    <description><![CDATA[]]></description>
    <parts>
      <startsPerDay>
<filename></filename>
      </startsPerDay>
      <startsHourFraction>
<filename></filename>
      </startsHourFraction>
      <startsSourceTypeFraction>
<filename></filename>
      </startsSourceTypeFraction>
      <startsMonthAdjust>
<filename></filename>
      </startsMonthAdjust>
      <importStartsOpModeDistribution>
<filename></filename>

```

```

        </importStartsOpModeDistribution>
        <Starts>
<filename></filename>
        </Starts>
    </parts>
</starts>
<hotelling>
    <description><![CDATA[]]></description>
    <parts>
        <hotellingHoursPerDay>
            <filename></filename>
        </hotellingHoursPerDay>
        <hotellingHourFraction>
            <filename></filename>
        </hotellingHourFraction>
        <hotellingAgeFraction>
            <filename></filename>
        </hotellingAgeFraction>
        <hotellingMonthAdjust>
            <filename></filename>
        </hotellingMonthAdjust>
        <hotellingActivityDistribution>
            <filename></filename>
        </hotellingActivityDistribution>
    </parts>
</hotelling>
<idle>
    <description><![CDATA[]]></description>
    <parts>
        <totalIdleFraction>
            <filename></filename>
        </totalIdleFraction>
        <idleModelYearGrouping>
            <filename></filename>
        </idleModelYearGrouping>
        <idleMonthAdjust>
            <filename></filename>
        </idleMonthAdjust>
        <idleDayAdjust>
            <filename></filename>
        </idleDayAdjust>
    </parts>
</idle>
<onroadretrofit>
    <description><![CDATA[]]></description>
    <parts>
        <onRoadRetrofit>
            <filename></filename>
        </onRoadRetrofit>
    </parts>
</onroadretrofit>
<generic>
    <description><![CDATA[]]></description>
    <parts>
        <anytable>
            <tablename>regioncounty</tablename>
<filename>C:\BCTMMOVES5\IN_AQ\MOVES\Fuel\MOVES5\MOVESDefaults\42000_RegionCounty_MOVE55Default.csv</filename>
        </anytable>
    </parts>
</generic>
</importer>
</moves>

```

MOVES Run Specification File – July Weekday Run (MOVESRUN.MRS)

```
<runspec version="MOVES5.0.0">
<description><![CDATA[MOVES5 RunSpec Created by CENTRAL4 Scenario: BERK 2030 JULWKD Ozone Emission Inventory with user's
data]]></description>
  <models>
    <model value="ONROAD"/>
  </models>
<modelscale value="Inv"/>
  <modeldomain value="SINGLE"/>
  <geographicselections>
    <geographicselection type="COUNTY" key="42011" description="Berks County, PA (42011)"/>
  </geographicselections>
  <timespan>
    <year key="2030"/>
  <month id="07"/>
  <day id="5"/>
    <beginhour id="1"/>
    <endhour id="24"/>
  <aggregateBy key="Hour"/>
  </timespan>
  <onroadvehicleselections>
    <onroadvehicleselection fueltypeid="2" fueltypedesc="Diesel Fuel" sourcetypeid="21" sourcetyponame="Passenger Car"/>
    <onroadvehicleselection fueltypeid="2" fueltypedesc="Diesel Fuel" sourcetypeid="31" sourcetyponame="Passenger Truck"/>
    <onroadvehicleselection fueltypeid="2" fueltypedesc="Diesel Fuel" sourcetypeid="32" sourcetyponame="Light Commercial Truck"/>
    <onroadvehicleselection fueltypeid="1" fueltypedesc="Gasoline" sourcetypeid="11" sourcetyponame="Motorcycle"/>
    <onroadvehicleselection fueltypeid="1" fueltypedesc="Gasoline" sourcetypeid="21" sourcetyponame="Passenger Car"/>
    <onroadvehicleselection fueltypeid="1" fueltypedesc="Gasoline" sourcetypeid="31" sourcetyponame="Passenger Truck"/>
    <onroadvehicleselection fueltypeid="1" fueltypedesc="Gasoline" sourcetypeid="32" sourcetyponame="Light Commercial Truck"/>
    <onroadvehicleselection fueltypeid="5" fueltypedesc="Ethanol (E-85)" sourcetypeid="21" sourcetyponame="Passenger Car"/>
    <onroadvehicleselection fueltypeid="5" fueltypedesc="Ethanol (E-85)" sourcetypeid="31" sourcetyponame="Passenger Truck"/>
    <onroadvehicleselection fueltypeid="5" fueltypedesc="Ethanol (E-85)" sourcetypeid="32" sourcetyponame="Light Commercial Truck"/>
    <onroadvehicleselection fueltypeid="3" fueltypedesc="Compressed Natural Gas (CNG)" sourcetypeid="42" sourcetyponame="Transit Bus"/>
    <onroadvehicleselection fueltypeid="3" fueltypedesc="Compressed Natural Gas (CNG)" sourcetypeid="41" sourcetyponame="Other Buses"/>
    <onroadvehicleselection fueltypeid="3" fueltypedesc="Compressed Natural Gas (CNG)" sourcetypeid="43" sourcetyponame="School Bus"/>
    <onroadvehicleselection fueltypeid="2" fueltypedesc="Diesel Fuel" sourcetypeid="41" sourcetyponame="Other Buses"/>
    <onroadvehicleselection fueltypeid="2" fueltypedesc="Diesel Fuel" sourcetypeid="42" sourcetyponame="Transit Bus"/>
    <onroadvehicleselection fueltypeid="2" fueltypedesc="Diesel Fuel" sourcetypeid="43" sourcetyponame="School Bus"/>
    <onroadvehicleselection fueltypeid="1" fueltypedesc="Gasoline" sourcetypeid="41" sourcetyponame="Other Buses"/>
    <onroadvehicleselection fueltypeid="1" fueltypedesc="Gasoline" sourcetypeid="42" sourcetyponame="Transit Bus"/>
    <onroadvehicleselection fueltypeid="1" fueltypedesc="Gasoline" sourcetypeid="43" sourcetyponame="School Bus"/>
    <onroadvehicleselection fueltypeid="3" fueltypedesc="Compressed Natural Gas (CNG)" sourcetypeid="51" sourcetyponame="Refuse Truck"/>
    <onroadvehicleselection fueltypeid="3" fueltypedesc="Compressed Natural Gas (CNG)" sourcetypeid="52" sourcetyponame="Single Unit Short-
haul Truck"/>
    <onroadvehicleselection fueltypeid="3" fueltypedesc="Compressed Natural Gas (CNG)" sourcetypeid="53" sourcetyponame="Single Unit Long-
haul Truck"/>
    <onroadvehicleselection fueltypeid="3" fueltypedesc="Compressed Natural Gas (CNG)" sourcetypeid="54" sourcetyponame="Motor Home"/>
    <onroadvehicleselection fueltypeid="3" fueltypedesc="Compressed Natural Gas (CNG)" sourcetypeid="61" sourcetyponame="Combination
Short-haul Truck"/>
    <onroadvehicleselection fueltypeid="3" fueltypedesc="Compressed Natural Gas (CNG)" sourcetypeid="62" sourcetyponame="Combination
Long-haul Truck"/>
    <onroadvehicleselection fueltypeid="2" fueltypedesc="Diesel Fuel" sourcetypeid="51" sourcetyponame="Refuse Truck"/>
    <onroadvehicleselection fueltypeid="2" fueltypedesc="Diesel Fuel" sourcetypeid="52" sourcetyponame="Single Unit Short-haul Truck"/>
    <onroadvehicleselection fueltypeid="2" fueltypedesc="Diesel Fuel" sourcetypeid="53" sourcetyponame="Single Unit Long-haul Truck"/>
    <onroadvehicleselection fueltypeid="2" fueltypedesc="Diesel Fuel" sourcetypeid="54" sourcetyponame="Motor Home"/>
    <onroadvehicleselection fueltypeid="2" fueltypedesc="Diesel Fuel" sourcetypeid="61" sourcetyponame="Combination Short-haul Truck"/>
    <onroadvehicleselection fueltypeid="2" fueltypedesc="Diesel Fuel" sourcetypeid="62" sourcetyponame="Combination Long-haul Truck"/>
    <onroadvehicleselection fueltypeid="1" fueltypedesc="Gasoline" sourcetypeid="51" sourcetyponame="Refuse Truck"/>
    <onroadvehicleselection fueltypeid="1" fueltypedesc="Gasoline" sourcetypeid="52" sourcetyponame="Single Unit Short-haul Truck"/>
    <onroadvehicleselection fueltypeid="1" fueltypedesc="Gasoline" sourcetypeid="53" sourcetyponame="Single Unit Long-haul Truck"/>
    <onroadvehicleselection fueltypeid="1" fueltypedesc="Gasoline" sourcetypeid="54" sourcetyponame="Motor Home"/>
    <onroadvehicleselection fueltypeid="1" fueltypedesc="Gasoline" sourcetypeid="61" sourcetyponame="Combination Short-haul Truck"/>
  </onroadvehicleselections>
  <offroadvehicleselections>
```

```
</offroadvehicleselections>
<offroadvehiclesccs>
</offroadvehiclesccs>
<roadtypes>
  <roadtype roadtypeid="1" roadtypename="Off-Network" modelCombination="M1"/>
  <roadtype roadtypeid="2" roadtypename="Rural Restricted Access" modelCombination="M1"/>
  <roadtype roadtypeid="3" roadtypename="Rural Unrestricted Access" modelCombination="M1"/>
  <roadtype roadtypeid="4" roadtypename="Urban Restricted Access" modelCombination="M1"/>
  <roadtype roadtypeid="5" roadtypename="Urban Unrestricted Access" modelCombination="M1"/>
</roadtypes>
<pollutantprocessassociations>
<pollutantprocessassociation pollutantkey="3" pollutantname="Oxides of Nitrogen (NOx)" processkey="1" processname="Running Exhaust"/>
<pollutantprocessassociation pollutantkey="3" pollutantname="Oxides of Nitrogen (NOx)" processkey="15" processname="Crankcase Running Exhaust"/>
<pollutantprocessassociation pollutantkey="3" pollutantname="Oxides of Nitrogen (NOx)" processkey="2" processname="Start Exhaust"/>
<pollutantprocessassociation pollutantkey="3" pollutantname="Oxides of Nitrogen (NOx)" processkey="16" processname="Crankcase Start Exhaust"/>
<pollutantprocessassociation pollutantkey="3" pollutantname="Oxides of Nitrogen (NOx)" processkey="90" processname="Extended Idle Exhaust"/>
<pollutantprocessassociation pollutantkey="3" pollutantname="Oxides of Nitrogen (NOx)" processkey="17" processname="Crankcase Extended Idle Exhaust"/>
<pollutantprocessassociation pollutantkey="3" pollutantname="Oxides of Nitrogen (NOx)" processkey="91" processname="Auxiliary Power Exhaust"/>
<pollutantprocessassociation pollutantkey="79" pollutantname="Non-Methane Hydrocarbons" processkey="1" processname="Running Exhaust"/>
<pollutantprocessassociation pollutantkey="79" pollutantname="Non-Methane Hydrocarbons" processkey="15" processname="Crankcase Running Exhaust"/>
<pollutantprocessassociation pollutantkey="79" pollutantname="Non-Methane Hydrocarbons" processkey="2" processname="Start Exhaust"/>
<pollutantprocessassociation pollutantkey="79" pollutantname="Non-Methane Hydrocarbons" processkey="16" processname="Crankcase Start Exhaust"/>
<pollutantprocessassociation pollutantkey="79" pollutantname="Non-Methane Hydrocarbons" processkey="90" processname="Extended Idle Exhaust"/>
<pollutantprocessassociation pollutantkey="79" pollutantname="Non-Methane Hydrocarbons" processkey="17" processname="Crankcase Extended Idle Exhaust"/>
<pollutantprocessassociation pollutantkey="79" pollutantname="Non-Methane Hydrocarbons" processkey="91" processname="Auxiliary Power Exhaust"/>
<pollutantprocessassociation pollutantkey="79" pollutantname="Non-Methane Hydrocarbons" processkey="11" processname="Evap Permeation"/>
<pollutantprocessassociation pollutantkey="79" pollutantname="Non-Methane Hydrocarbons" processkey="12" processname="Evap Fuel Vapor Venting"/>
<pollutantprocessassociation pollutantkey="79" pollutantname="Non-Methane Hydrocarbons" processkey="13" processname="Evap Fuel Leaks"/>
<pollutantprocessassociation pollutantkey="1" pollutantname="Total Gaseous Hydrocarbons" processkey="1" processname="Running Exhaust"/>
<pollutantprocessassociation pollutantkey="1" pollutantname="Total Gaseous Hydrocarbons" processkey="15" processname="Crankcase Running Exhaust"/>
<pollutantprocessassociation pollutantkey="1" pollutantname="Total Gaseous Hydrocarbons" processkey="2" processname="Start Exhaust"/>
<pollutantprocessassociation pollutantkey="1" pollutantname="Total Gaseous Hydrocarbons" processkey="16" processname="Crankcase Start Exhaust"/>
<pollutantprocessassociation pollutantkey="1" pollutantname="Total Gaseous Hydrocarbons" processkey="90" processname="Extended Idle Exhaust"/>
<pollutantprocessassociation pollutantkey="1" pollutantname="Total Gaseous Hydrocarbons" processkey="17" processname="Crankcase Extended Idle Exhaust"/>
<pollutantprocessassociation pollutantkey="1" pollutantname="Total Gaseous Hydrocarbons" processkey="91" processname="Auxiliary Power Exhaust"/>
<pollutantprocessassociation pollutantkey="1" pollutantname="Total Gaseous Hydrocarbons" processkey="11" processname="Evap Permeation"/>
<pollutantprocessassociation pollutantkey="1" pollutantname="Total Gaseous Hydrocarbons" processkey="12" processname="Evap Fuel Vapor Venting"/>
<pollutantprocessassociation pollutantkey="1" pollutantname="Total Gaseous Hydrocarbons" processkey="13" processname="Evap Fuel Leaks"/>
<pollutantprocessassociation pollutantkey="87" pollutantname="Volatile Organic Compounds" processkey="1" processname="Running Exhaust"/>
<pollutantprocessassociation pollutantkey="87" pollutantname="Volatile Organic Compounds" processkey="2" processname="Start Exhaust"/>
```

```

<pollutantprocessassociation pollutantkey="87" pollutantname="Volatile Organic Compounds" processkey="12" processname="Evap Fuel Vapor Venting"/>
<pollutantprocessassociation pollutantkey="87" pollutantname="Volatile Organic Compounds" processkey="13" processname="Evap Fuel Leaks"/>
<pollutantprocessassociation pollutantkey="87" pollutantname="Volatile Organic Compounds" processkey="15" processname="Crankcase Running Exhaust"/>
<pollutantprocessassociation pollutantkey="87" pollutantname="Volatile Organic Compounds" processkey="16" processname="Crankcase Start Exhaust"/>
<pollutantprocessassociation pollutantkey="87" pollutantname="Volatile Organic Compounds" processkey="17" processname="Crankcase Extended Idle Exhaust"/>
<pollutantprocessassociation pollutantkey="87" pollutantname="Volatile Organic Compounds" processkey="90" processname="Extended Idle Exhaust"/>
<pollutantprocessassociation pollutantkey="79" pollutantname="Non-Methane Hydrocarbons" processkey="91" processname="Auxiliary Power Exhaust"/>
<pollutantprocessassociation pollutantkey="1" pollutantname="Total Gaseous Hydrocarbons" processkey="91" processname="Auxiliary Power Exhaust"/>
<pollutantprocessassociation pollutantkey="87" pollutantname="Volatile Organic Compounds" processkey="91" processname="Auxiliary Power Exhaust"/>
<pollutantprocessassociation pollutantkey="79" pollutantname="Non-Methane Hydrocarbons" processkey="11" processname="Evap Permeation"/>
<pollutantprocessassociation pollutantkey="1" pollutantname="Total Gaseous Hydrocarbons" processkey="11" processname="Evap Permeation"/>
<pollutantprocessassociation pollutantkey="87" pollutantname="Volatile Organic Compounds" processkey="11" processname="Evap Permeation"/>
  </pollutantprocessassociations>
  <databaseselections>
<databaseselection servername="" databasename="MOVES5_early_NLEV" description=""/>
<databaseselection servername="" databasename="MOVES5_calevii08" description=""/>
  </databaseselections>
  <internalcontrolstrategies>
  </internalcontrolstrategies>
  <inputdatabase servername="" databasename="" description=""/>
  <uncertaintyparameters uncertaintymodeenabled="false" numberofrunspersimulation="0" numberofsimulations="0"/>
<geographicoutputdetail description="COUNTY"/>
  <outputemissionsbreakdownselection>
<modelyear selected="false"/>
<fueltype selected="false"/>
  <fuelsubtype selected="false"/>
<emissionprocess selected="true"/>
  <onroadoffroad selected="false"/>
<roadtype selected="true"/>
<sourceusetype selected="true"/>
  <movesvehicletype selected="false"/>
<onroadscf selected="false"/>
  <estimateuncertainty selected="false" numberofiterations="2" keepSampledData="false" keepiterations="false"/>
  <sector selected="false"/>
  <engtechid selected="false"/>
  <hpclass selected="false"/>
  <regclassid selected="false"/>
  </outputemissionsbreakdownselection>
  <outputdatabase servername="localhost" databasename="42011_2030_07_05_Ozone_mo" description=""/>
<outputtimestep value="Hour"/>
  <outputvmtdata value="true"/>
  <outputsho value="true"/>
  <outputsh value="true"/>
  <outputshp value="true"/>
  <outputshidling value="true"/>
  <outputstarts value="true"/>
  <outputpopulation value="true"/>
  <scaleinputdatabase servername="localhost" databasename="42011_2030_07_05_Ozone_mi" description=""/>
  <pmsize value="0"/>
  <outputfactors>
    <timefactors selected="true" units="Hours"/>
    <distancefactors selected="true" units="Miles"/>

```

```
<massfactors selected="true" units="Grams" energyunits="Million BTU"/>
</outputfactors>
<savedata>
</savedata>
<donotexecute>
</donotexecute>
<generatordatabase shouldsave="false" servername="" databasename="" description=""/>
<donotperformfinalaggregation selected="false"/>
<lookuptableflags scenarioid="" truncateoutput="true" truncateactivity="true" truncatebaserates="true"/>
<skipdomaindatabasevalidation selected="false"/>
</runspec>
```

READING AREA TRANSPORTATION STUDY 2026

Reading Area Transportation Study Coordinating Committee

<i>PennDOT District 5-0</i>	<i>Mr. Chris Kufro, District Executive (Chair)</i> <i>Ms. Jennifer Ruth, Planning & Program Manager*</i>
<i>PennDOT Central Office</i>	<i>Mr. Ray Green, Chief of Financial and Contract Services, Center for Program Development and Management</i> <i>Mr. Nick Raio, Trans. Planning Specialist Supervisor *</i>
<i>Berks County Commissioners</i>	<i>Mr. Michael Rivera, Commissioner</i>
<i>Berks County Planning Commission</i>	<i>Mr. Thomas McKeon, Board Member (Vice Chair)</i> <i>Mr. Alan Piper, Transportation Planner III (MPO Secretary)*</i>
<i>City of Reading</i>	<i>Ms. Donna Reed, Council Member</i> <i>Mr. O. Chris Miller, Council Member*</i>
<i>Berks County Boroughs</i>	<i>Mr. Brian Hoffa, Borough Council Member (Sinking Spring Borough)</i>
<i>Berks County 1st Class Townships</i>	<i>Ms. Lisha Rowe, Township Commissioner (Cumru Township)</i>
<i>Berks County 2nd Class Townships</i>	<i>Mr. Arthur "Ray" Lambert, Township Supervisor (Upper Bern Township)</i>
<i>South Central Transit Authority / Berks Area Regional Transportation Authority</i>	<i>Mr. Greg Downing, Executive Director</i> <i>Mr. Keith Boatman, Assoc. Director of Capital Projects/Planning*</i>
<i>Reading Regional Airport Authority</i>	<i>Mr. Dante Santoni, Jr., Board Member</i>

Reading Area Transportation Study Technical Committee

<i>PennDOT District 5-0</i>	<i>Mr. Scott Vottero, District Executive for Design (Chair)</i> <i>Mr. Michael Donchez, Transportation Planning Specialist*</i>
<i>PennDOT Central Office</i>	<i>Ms. Nyomi Nonnemaker, Transportation Planning Specialist (Vice Chair)</i> <i>Mr. Nick Raio, Trans. Planning Specialist Supervisor *</i>
<i>Berks County Planning Commission</i>	<i>Mr. Alan Piper, Transportation Planner III (MPO Secretary)</i> <i>Ms. Amanda Timochenko, Transportation Planner II*</i>
<i>Berks County Planning Commission</i>	<i>Mr. Michael Golembiewski, Transportation Modeler</i> <i>Ms. Amanda Timochenko, Transportation Planner II*</i>
<i>City of Reading</i>	<i>Mr. Donald Edwards, Reading City Engineer</i>
<i>City of Reading</i>	<i>Mr. Kyle Zeiber, Department of Public Works</i>
<i>South Central Transit Authority / Berks Area Regional Transportation Authority</i>	<i>Mr. Keith Boatman, Assoc. Director of Capital Projects/Planning</i> <i>Ms. Lauri Ahlskog, Manager of Transit Planning & Compliance*</i>
<i>Reading Regional Airport Authority</i>	<i>Mr. Zackary Tempesco, Airport Manager</i>

* Denotes Board Alternate

Berks County Planning Commission Staff for this Report

Amanda Timochenko, Transportation Planner II
Michael Golembiewski, Transportation Modeler (Project Planner)
Alan Piper, Transportation Planner III