



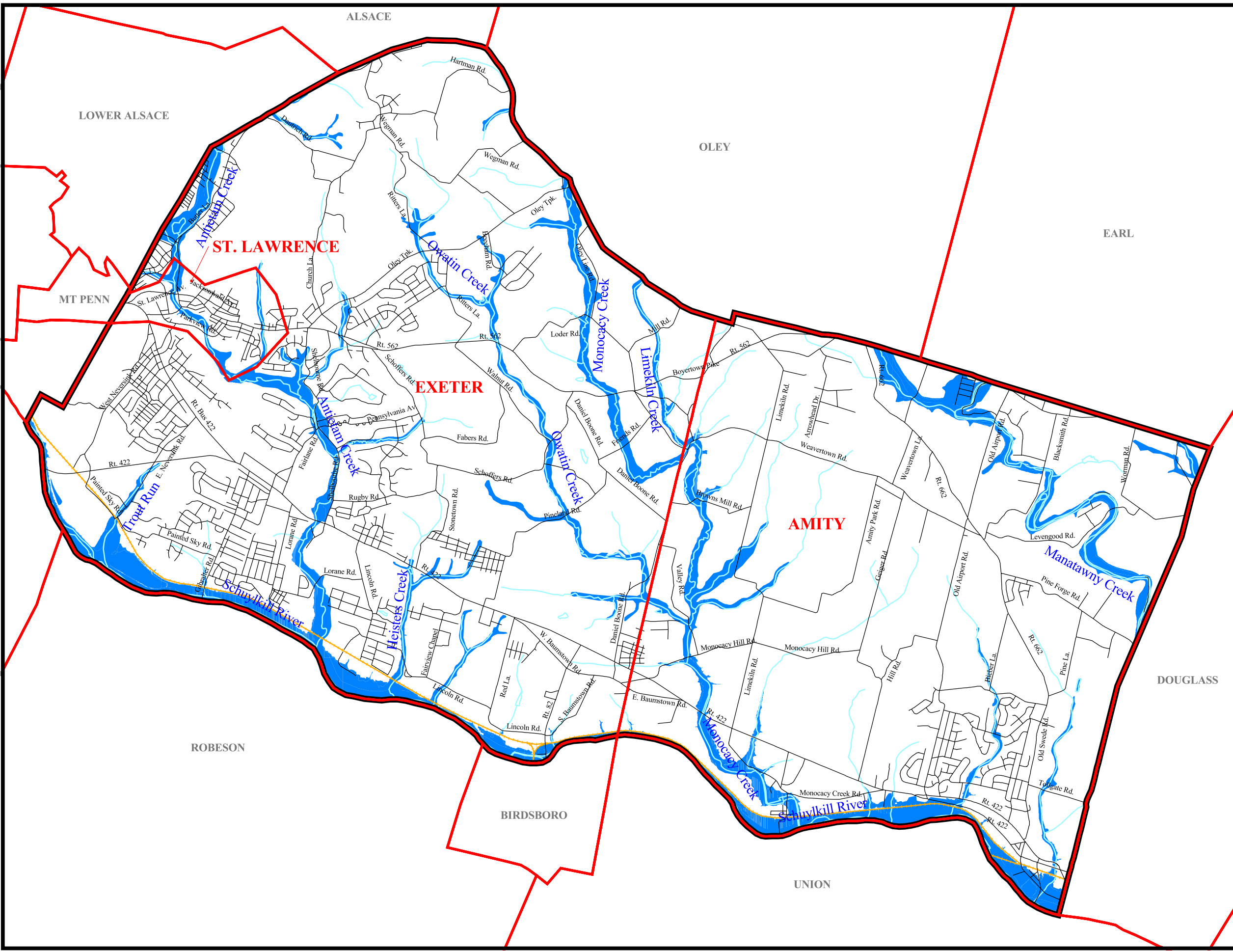


**Stream Corridor Preservation Plan
The Joint Comprehensive Plan
For St. Lawrence, Exeter and Amity,
Berks County**

-  Roads 11x17
-  Railroads
-  Streams
-  Stream Corridor Preservation



Data source: Berks County GIS and SSM



Spotts, Stevens and McCoy, Inc.
1047 N. Park Rd.
Reading, PA 19610-0307
Tel: 610-621-2000 Fax: 610-376-6950

07/09/03

g:\projects\w6000\w6128\
w6128004\projects\
w6128_004.apr