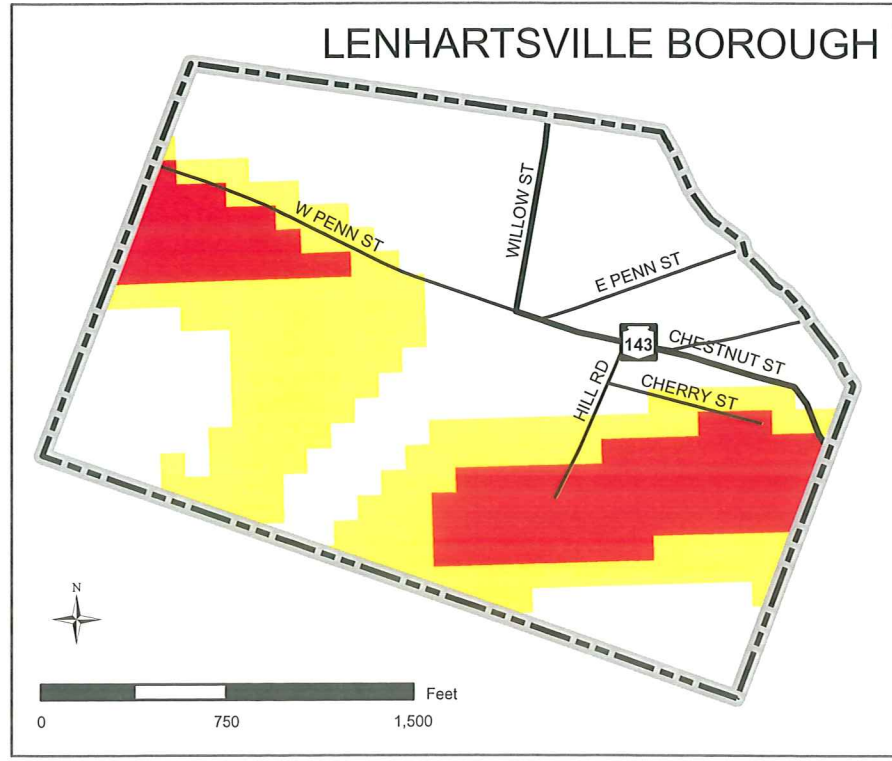
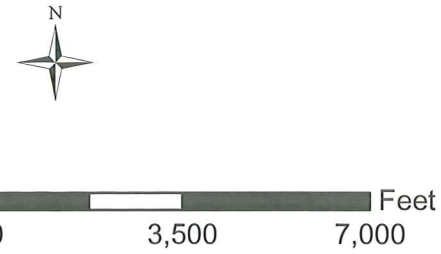


- Slope**
- > 25%
 - 15-25%
 - < 15%
 - Municipal Boundary
 - Major Roads
 - Local Roads



The preparation of this map was financed in part through a Land Use Planning and Technical Assistance Grant from the Department of Community and Economic Development, as administered by the Governor's Center for Local Government Services, Pennsylvania Department of Community and Economic Development.



Topography April 2009

Greenwich Township & Lenhartsville Borough Berks County, Pennsylvania

Source Data: Berks County Planning Commission, Urban Research & Development Corporation