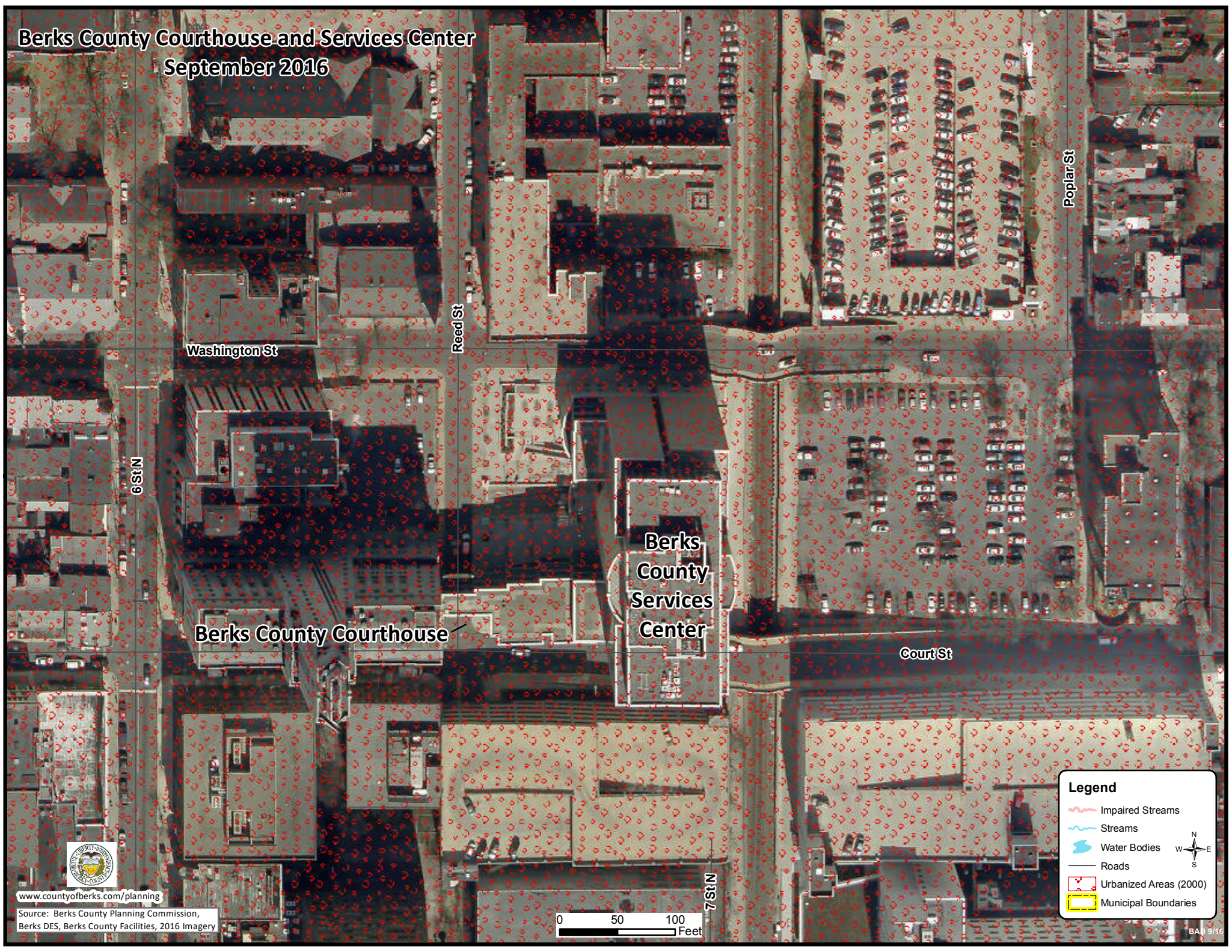


# Berks County Courthouse and Services Center September 2016



6 St N

Washington St

Reed St

Poplar St

Berks County Courthouse

Berks County Services Center

Court St

7 St N

**Legend**

- Impaired Streams
- Streams
- Water Bodies
- Roads
- Urbanized Areas (2000)
- Municipal Boundaries

[www.countyofberks.com/planning](http://www.countyofberks.com/planning)

Source: Berks County Planning Commission, Berks DES, Berks County Facilities, 2016 Imagery

