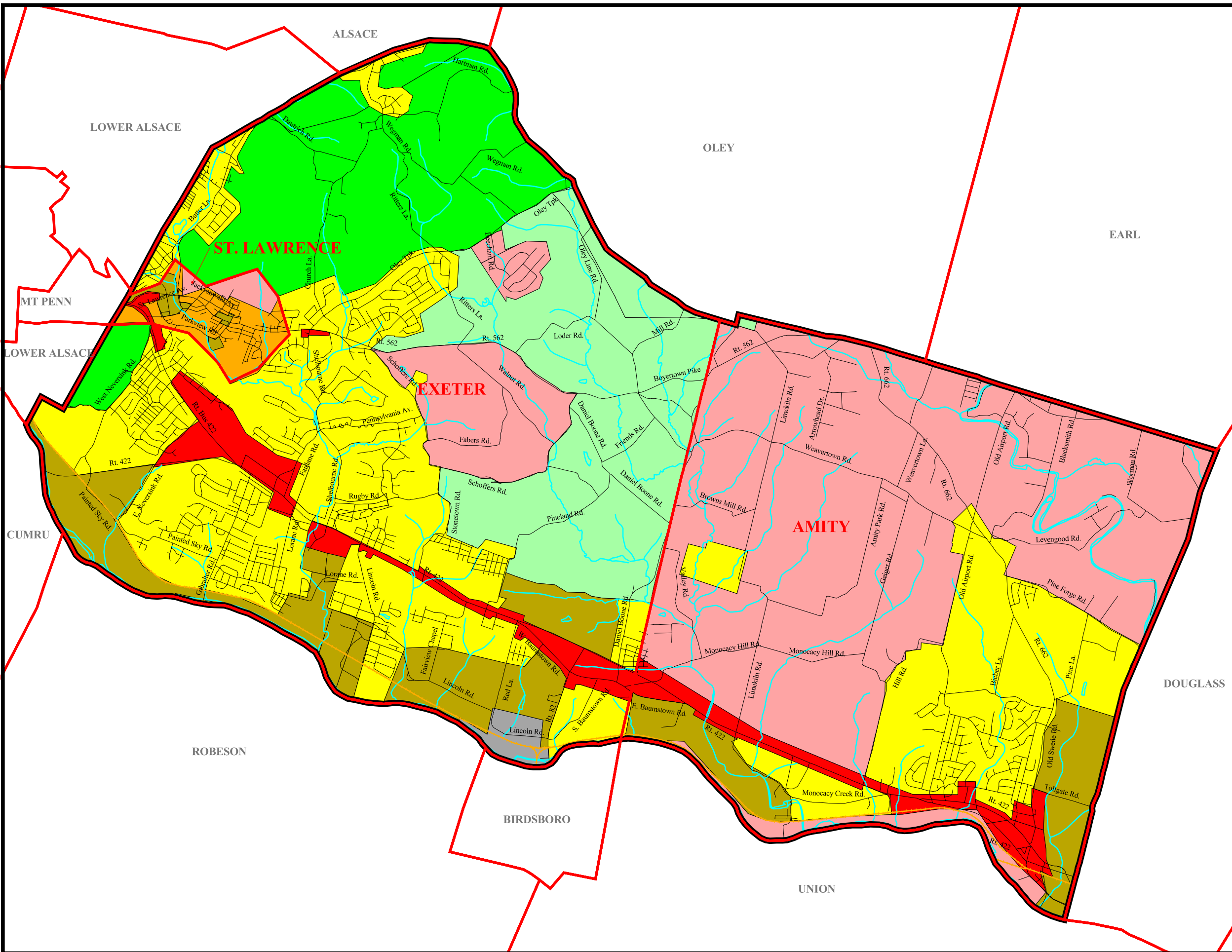


**Generalized Existing Zoning
The Joint Comprehensive Plan
For St. Lawrence, Exeter and Amity,
Berks County**

- Generalized Existing Zoning
- Commercial
 - Conservation/Preservation/Recreation
 - Effective Agricultural Zoning
 - High Density Residential
 - Industrial
 - Low Density Residential
 - Medium Density Residential
 - Mixed Use (Generally Industrial & Commercial)



Data source: Berks County GIS and SSM



Spotts, Stevens and McCoy, Inc.
1047 N. Park Rd.
Reading, PA 19610-0307
Tel: 610-621-2000 Fax: 610-376-6950

06/12/03 g:\projects\w6000\w6128\w6128004\projects\w6128_004.apr