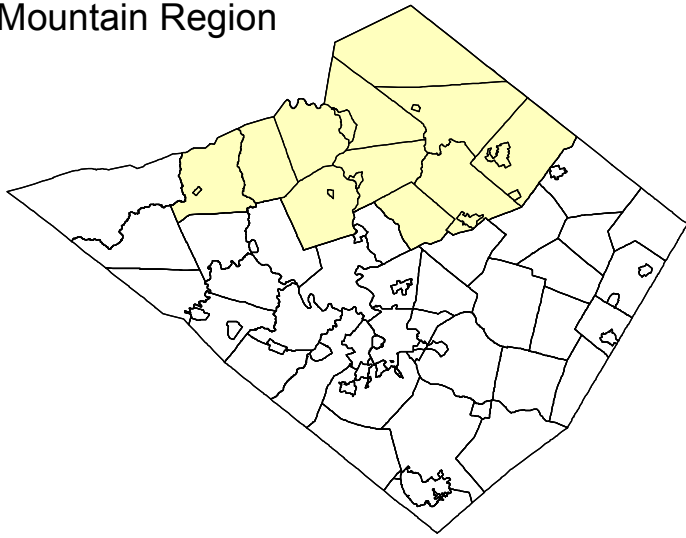


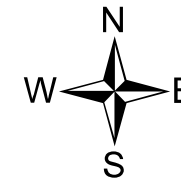
Hawk Mountain Region



Sewer and Water Regionalization Map Update
December 2012

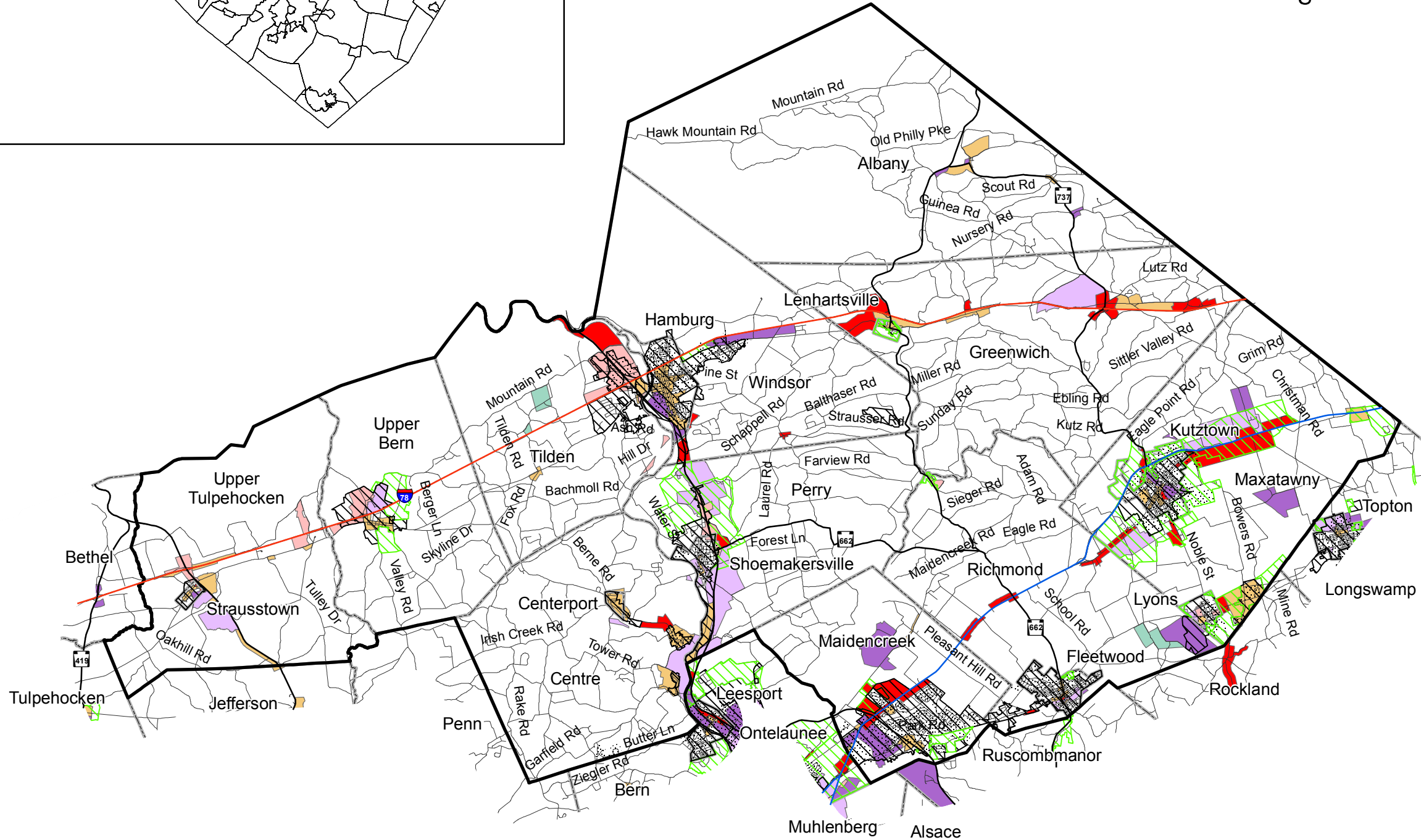
Public Sewer and Water Service Areas with Composite Zoning

Hawk Mountain Region



Composite Zoning

- Commercial
- General Commercial
- Light Industrial
- General Industrial
- Planned Office Business
- Town Center / Village Commercial
- Existing Sewer Service
- Proposed Sewer Service
- Existing Water Service
- Hawk Mountain Boundary
- Municipal Boundaries
- Interstate
- US Route
- State Route
- Roads



Source: Berks County Planning Commission, Berks County GIS, Berks County Department of Emergency Services, DEP, local municipalities
Map created by: Berks County Planning Commission

BAB 2/13



www.countyofberks.com/planning

