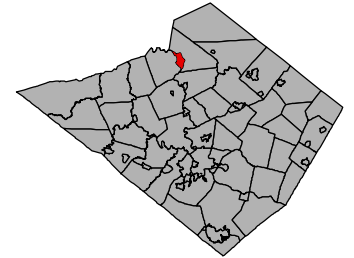


FIGURE 29

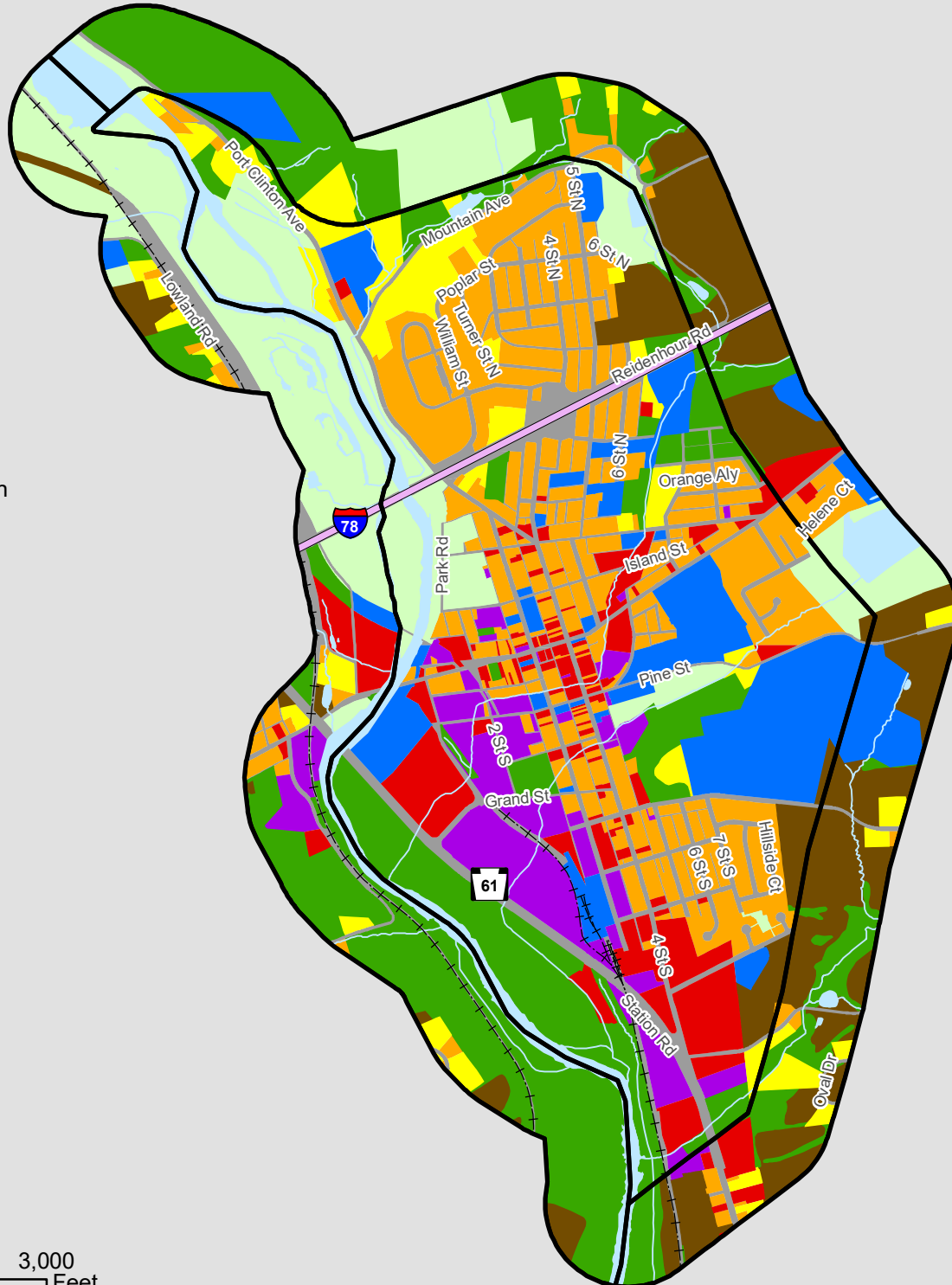
Hamburg, Perry, Shoemakersville, Tilden, Upper Bern, Upper Tulpehocken, Windsor  
Joint Comprehensive Plan Update  
June 2022

### Existing Land Use Hamburg Borough



Tilden

Windsor



#### Legend

- Residential Low
- Residential High
- Commercial
- Industrial
- Institutional
- Recreation
- Open Space
- Agriculture
- Water
- Transportation
- Interstate
- Railroads
- Municipal Boundaries

Source data:  
Berks County Planning Commission GIS, Berks County GIS/IS, Berks County Mapping, Berks DES

Published by the Berks County Planning Commission  
BAB 6/22

