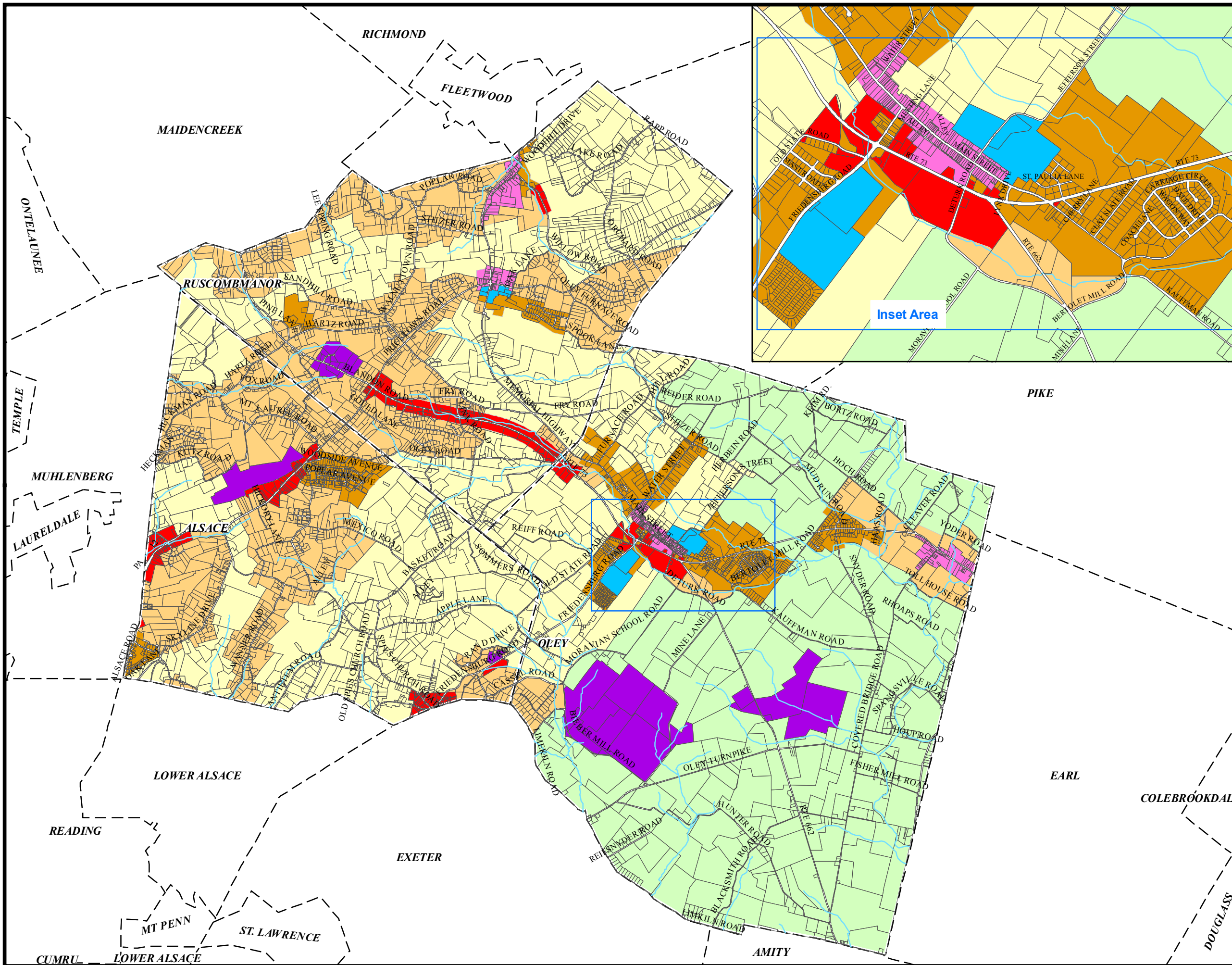
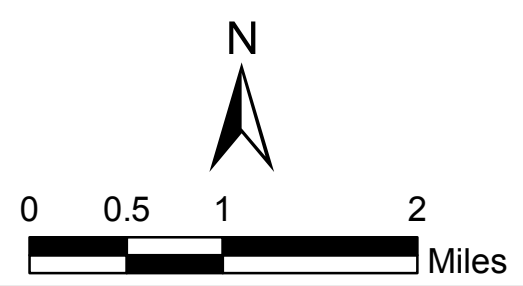


**Joint Comprehensive Plan  
Oley, Alsace and  
Ruscombmanor Townships  
Berks County, PA**

**Figure 6.1.  
Future Land Use**



- Inset Area
- stream
- Parcel
- Future Land Use**
- Agricultural Preservation
- Rural
- Low Density Residential
- Medium Density Residential
- Village
- Commercial
- Industrial
- Public/Institutional
- Road



Data source: Berks Co. GIS, SSM

READING  
1047 North Park Road  
PO Box 6307  
Reading, PA 19610-0307  
PH: 610.621.2000  
FAX: 610.621.2001



SPOTTS | STEVENS | McCOY

LEHIGH VALLEY  
City Line Plaza, Suite 300  
2005 City Line Road  
Bethlehem, PA 18017-7701  
PH: 610.849.9700  
FAX: 610.849.9701

Engineers and Consultants

ssmgroup.com

07/30/08

G:\projects\w100000\  
w108259\w0003\  
projects\p11x17\  
Fig\_6\_1\_future\_luse11x17.mxd